



ANNUAL BOARD MEETING

Saturday, July 10, 2021

Palm 1/2

9:00 am – 3:30 pm PT

Board Book available on [Board Page](#)

AGENDA

1. **President's Report** (30-45 minutes) *T.J. BeMent*
 - a. Approval of June 8th Board Meeting Minutes (Action Item)
 - b. Overview of the Officers meeting
 - c. Marcy Podkopacz's retirement
 - d. Letter of Support to Georgia for NCSC International
 - e. Annual Business Meeting Walk-Through
 - f. NCSC MOU
2. **President-Elect's Report** (20 minutes) *Kathy Griffin*
 - a. Conference Updates (incl. safety protocols and emergency plan)
3. **Vice President Report** (5 minutes) *Jeffrey Tsunekawa*
 - a. Education Committee Report
4. **Secretary/Treasurer's Report** (20-30 minutes) *Rick Pierce*
 - a. Review of current financials
 - b. Swag Funds – Restricted or Operating (Action Item)
5. **Immediate Past President's Report** (15 minutes) *Will Simmons*
 - a. Past President's Report
6. **Governance Committee** (30 minutes) *Angie VanSchoick*
 - a. Operations Manual (Action Item)
 - b. Diversity, Equity, & Inclusion (Action Item)
 - c. Resolutions (Action Item)
7. **Membership Services** (20 minutes) *Tina Mattison*
 - a. Membership Scholarship Giveaway during Annual (Action Item)
 - b. NACM awards (Action Item)
 - c. Membership Numbers (Action Item)
 - d. Review of updated Dual Membership Agreements



8. Communications Committee (15 minutes)

Charleston Carter

- a. Webinars
- b. Court Express
- c. Court Manager
- d. Partnerships
- e. Website
- f. Public Landing Pages

9. NCSC Update

Jesse Rutledge

10. 2021 Strategic Projects (30 minutes)

All

- a. Progress Updates by Board members on all projects

11. Partner Reports & Updates* (15-20 minutes)

- a. COSCA
- b. American Judges Association
- c. National Conference of Juvenile & Family Court Judges
- d. National Association of State Judicial Educators
- e. National College of Probate Judges
- f. International Association for Court Administration

Jeff Shorba

Pete Sferrazza

Judge Dan Michael

Todd Brower

Judge Brenda Hull Thompson

Report

12. New Business/Open Discussion

- a. Board appreciation

T.J. BeMent

13. Executive Session (if needed)

All

14. Adjourn

****NOTE – Will break for lunch at approximately 12PM and will be joined by any representatives from partners. Will return to agenda after reports from partners.***



NACM BOARD MEETING MINUTES
Tuesday, June 8, 2021 at 2:00 PM ET

PRESENT: TJ BeMent, Jeff Chapple, Angie VanSchoick, Rick Pierce, Kathy Griffin, Will Simmons, Greg Lambard, Tina Mattison, Dorothy Howell, Kelly Hutton, Michelle Dunivan, Jude DelPreore, Erin Carr, Jesse Rutledge, Jennifer Haire, Charleston Carter

No Present: Kent Pankey

1. Previous Meeting Minutes - One adjustment to previous minutes – add Paul DeLosh to the list of JTC appointments from NACM. No other discussions, **minutes are approved.**
2. President-Elect –
 - a. The pace report numbers are continually increasing.
 - b. Request from Erin to upgrade to “premium” Vimeo membership for \$900 – **TJ made a motion to upgrade to Premium not to exceed \$1,000. Rick seconds the motion to authorize payment up to \$1,000 for the Vimeo upgrade.** No other discussions or objections, **motion is passed.**
 - c. Board meeting on Saturday and in the evening bowling. Sunday evening – Board is not expected to be at all receptions but asked to be as at many as comfortable attending. TJ gave a breakdown of conference activities for the Board to attend.
 - d. Kathy suggested highlighting virtual attendees during breaks on PowerPoint slideshow, and with the hosts at the start of the session to make it more engaging for the virtual attendees.
 - e. Committee chair slides are in Box to be updated for this year’s business meeting.
 - f. Jeffrey asked if Board pictures will take place on the last day of the conference. Erin informed that there are three IT members coming to the conference that will take pictures.
 - g. Kathy reminded everyone that Tuesday should be NACM swag day. We will put this message in the “know before you go” and on the agenda.
3. Vice President –
 - a. CORE champion and DEI –
 - i. Seven responses submitted and the workgroup approved all responses. Norman Meyer session will be on DEI and Core. He asked if NACM would be willing to consider his session for credit towards Core Champion – his session focuses on all parts of Core. Options – 1) choose a section of the Core and apply it (more in-depth response) and could get credit for



- whatever section the person chooses; 2) add another level to Core champion to include a DEI session or make a note on final Core certificate that they are also DEI awarded, or make some other notation. TJ said he thinks they should just have the person choose a topic.
- ii. TJ asked Erin to add structured tests available on app so they can download right from there during the CORE session, and to note if the session is Core champion eligible.
4. Treasurer's Report – Rick shared supplemental report. TJ summarized that the April supplemental report is about half the revenue for membership, however, it does not include registrations or memberships we would get during annual. Expenses are remaining low for the time being. Will know more once annual is over.
5. Past President's Report – Past Presidents are still reaching out to dropped/purged members. Will thinks that perhaps this is not increasing membership. He suggested that committee members make personal calls by state to get numbers up.
- a. Nominations committee will meet on Sunday at conference. Interviews will happen in person and remotely through Zoom.
- b. DEI – Committee would like to be a permanent committee, standing committee or subcommittee (under Governance) where DEI is consulted for various committees, similar to Ethics. TJ said a decision will be made at the Board meeting in July.
6. Communications Committee – Tyler Technologies' first webinar is June 23rd, second is on August 18. Both are at noon ET.
7. Governance Committee – Committee is finalizing State of the Profession. The newest version of the National Agenda is on the website. Operations Manual – almost done with updates. It will be presented at board meeting in July for approval. Voice of the Profession survey is almost done and ready to send out. Resolution #2 from CCJ COSCA is up on site to adopt and will need to ask for comments. Erin will let Kathy and TJ know when next email blast will be so they can add a comment about the resolution in there.
8. Membership –
- a. ECP - NACM Cares Charity – Urban League of San Diego. Fundraising during social event will be a cornhole tournament with \$5 buy in.
- b. Tina was going to solicit past presidents for donations for membership scholarships to give away at annual. TJ would like to give away a scholarship to an in-person non-member and a virtual non-member.



- c. Jeff asked where NACM swag funds go to – membership or donation. Michelle said it goes to general operating because it is usually less than \$1,000. TJ asked if NACM wants to move funds from swag into the scholarship account (restricted)? Michelle would like more flexibility with how funds are used. TJ suggested splitting if we know \$1K usually comes in – first \$500 goes to restricted scholarship account and the remaining goes to general operating. This will be discussed during the annual board meeting.
 - d. Awards – 5 enhancing justice, 1 award of merit, and 3 ECP award nominees.
9. NCSC Business – Jesse wanted to make sure everyone was aware of the report on implicit bias authored by NCSC Research staff members. RRT Post Pandemic related items. Two webinars coming up – June 9 Housing Instability includes a data briefing provided by Urban Institute; June 15 Public Health Considerations (Epidemiologists speaking on what the science is showing right now). NCSC gathering information on masking requirements by state. This is on the pandemic part of NCSC website. CTC coming up in Columbus. They have not opened registration yet until they have a better sense of how things will look which will hopefully be in the next couple of weeks. CTC will not have discounts for associations or early bird rates this year. Jesse will be there on Friday and Saturday; Jennifer will be there Sunday through the end of conference.
10. Saturday morning conversation will be the Center contract with NACM since this year's was just a one-year contract.

Recording: <https://nationalcenterforstatecourts.box.com/s/we40w8hxsc3s7hczahc7w3w0pwrek4fa>



National Association for Court Management

Strengthening Court Professionals

2020-2021 Board

OFFICERS

President

Tracy J. BeMent

District Court Administrator
10th Judicial District, Georgia
(706) 613-3173
tj@nacmnet.org

President Elect

Kathryn Griffin

Court Administrator
45th Circuit Court, Michigan
(269) 467-5595
kathy@nacmnet.org

Vice President

Jeffrey Tsunekawa

Director of Research & Court Services
Austin, Texas
(512) 463-2417
jeffrey@nacmnet.org

Secretary/Treasurer

Richard J. Pierce

Judicial Programs Administrator
Administrative Office of the Courts, Pennsylvania
(717) 231-3300
rick@nacmnet.org

Immediate Past President

William T. Simmons

District Court Administrator
6th Judicial District, Georgia
(770) 898-7623
will@nacmnet.org

DIRECTORS

Charleston Carter

Deputy Director for Superior Courts
Washington, D.C.
(202) 879-1680
charleston@nacmnet.org

Jeff Chapple

Court Administrator
O'Fallon Municipal Court, Missouri
(636) 739-5514
jeff@nacmnet.org

Michelle Dunivan

Research Director
Superior Court of Arizona
(602) 372-0719
michelle@nacmnet.org

Dorothy Howell

Division Manager
New Jersey Superior Court
(973) 776-9032
dorothy@nacmnet.org

Kelly Hutton

Assistant Court Administrator
North Dakota Court System
(701) 787-2732
kellyh@nacmnet.org

Greg Lambard

Trial Court Administrator
Superior Court of NJ, Middlesex Vicinage
(732) 645-4300 x88018
greg@nacmnet.org

Tina Mattison

Deputy Court Administrator, Juvenile Court
Pima County Superior Court, Arizona
(520) 724-2956
tina@nacmnet.org

Kenneth Pankey

Senior Planner
Supreme Court of Virginia/OES
(804) 786-7588
kent@nacmnet.org

Angie VanSchoick

Court Administrator
Town of Breckenridge, Colorado
(970) 453-3165
angie@nacmnet.org

June 16, 2021

Jeff Apperson

Vice-President

National Center for State Courts

Re: Rule of Law Activity in Georgia
Notice of Funding Opportunity #72011421RFA00005

Dear Mr. Apperson:

The National Association for Court Management (NACM) is the largest organization of court management professionals in the world with members from all levels and types of courts. For over 40 years, NACM has been a pioneer in the administration of justice. NACM is dedicated to improving court management in the United States and abroad, as a strong court system leads to economic development and human rights for all.

NACM would be pleased to work with the National Center for State Courts on the Rule of Law activity in Georgia.

NACM recognizes the importance of working with international partners to promote the value of court administration worldwide. Through its standing International Committee, NACM serves as a point of contact for specialized technical assistance in professional court management, advanced education and training, creating partnerships between courts, facilitating on-site visits, and advocacy for the rule of law.

We look forward to collaborating with NCSC on this important initiative.

Sincerely,

Tracy J. BeMent

NACM President



National Association for Court Management

Strengthening Court Professionals

Education Committee Progress Report Form – 2020-2021

	Report	Due Date	Submission Date
	Fall Progress Report	November 4, 2020	
	Midyear Progress Report	January 2021	
X	Annual Progress Report	June 2021	June 17, 2021

Project	Project Status	Strategic Priority? (Yes/No)	Discussion Needed? (Yes/No)	Board Action Needed? (Yes/No)	If Yes to discussion or action, please describe what needed
CDC sub-committee	Mid Year Education Series Completed Annual Conference Agenda Completed	Yes	No	No	
Core Curricula Review	Leadership Curricula Updated	Yes	No	No	
Core Curricula Review	Operations Management Updated	Yes	No	No	
Core Champion	Finalized, Promoted, and Live	Yes	No	No	
2022 Conferences	Midyear and Annual Conference Themes Brainstormed	Yes	No	No	

Time needed at meeting for Committee report: 5 minutes

Submitted by: Jeffrey M. Tsunekawa

Date: June 17, 2021

**National Association for Court Management
Supplemental Report
May 31, 2021**

National Association for Court Management
Budget vs Actual
For the Five Months Ended May 31, 2021

	YTD	Annual Budget	Variance	% Budget
Revenue				
4000 · Membership Dues/Regular	\$ 85,670	\$ 159,300	\$ (73,630)	54%
4005 · Membership Dues/Associate	6,315	15,525	(9,210)	41%
4010 · Membership Dues/Sustaining	2,500	5,000	(2,500)	50%
4015 · Membership Dues/Retired	1,185	2,300	(1,115)	52%
4025 · Membership Dues/Student	70	175	(105)	40%
4030 · Membership Dues/DUAL	7,335	11,500	(4,165)	64%
4040 · Membership Dues/Virtual	430	-	430	0%
4050 · Scholarship Fund	245	3,000	(2,755)	8%
4065 · Donations/Other	45,000	90,000	(45,000)	50%
4070 · Interest Income/Regular	4	-	4	0%
4090 · Fees and Registrations	101,280	393,000	(291,720)	26%
4100 · Social/Other Income	-	10,000	(10,000)	0%
4110 · Vendor Income	38,850	180,500	(141,650)	22%
4120 · Sponsorship Income	34,000	95,000	(61,000)	36%
4130 · Grant Income	9,380	238,103	(228,723)	4%
4140 · Advertising Income	1,673	13,000	(11,327)	13%
4150 · Publication Sales	255	900	(645)	28%
Total Revenue	334,192	1,217,303	(883,111)	27%
Expense				
5100 · Travel/General	472	41,612	(41,140)	1%
5105 · Travel/President	257	7,500	(7,243)	3%
5110 · Travel/Officer	1,107	1,500	(393)	74%
5120 · Travel/Site Visit	-	2,000	(2,000)	0%
5125 · Travel/Association Serv.	682	9,648	(8,966)	7%
5130 · SJI Speaker Travel	491	13,000	(12,509)	4%
5200 · Honoraria	1,250	15,000	(13,750)	8%
5300 · Conference Expenses	9,093	21,450	(12,357)	42%
5310 · Food and Beverages	-	274,924	(274,924)	0%
5320 · Audio Visual	-	40,384	(40,384)	0%
5400 · President's Discretionary	-	2,500	(2,500)	0%
5600 · Scholarships	-	6,410	(6,410)	0%
5650 · Awards	-	1,300	(1,300)	0%
5700 · Presidents Gifts	-	400	(400)	0%
6010 · Webinars	2,411	1,632	779	148%
6200 · Postage	163	2,800	(2,637)	6%
6300 · Printing/Photocopying	2,720	12,625	(9,905)	22%
6400 · Office Supplies	-	100	(100)	0%
6500 · Insurance Expense	-	9,500	(9,500)	0%
6600 · Consultant	7,000	161,507	(154,507)	4%
6610 · Audit Fee	-	3,000	(3,000)	0%
6700 · Website Devp/Internet Exp	3,142	8,070	(4,928)	39%
6800 · Credit Card Fees	5,966	12,000	(6,034)	50%
6810 · Licenses & Fees	790	158	632	500%
6820 · Admin Supp/Contract Fee	194,179	388,357	(194,178)	50%
6950 · Depreciation	1,847	4,500	(2,653)	41%
7000 · Grant Match-Travel	-	5,000	(5,000)	0%
7010 · Grant Match-Honorarium	-	10,000	(10,000)	0%
7020 · Grant Match-Audio Visual	-	40,384	(40,384)	0%
7030 · Grant Match-Admin Support	25,000	50,000	(25,000)	50%
Total Expense	256,570	1,147,261	(890,691)	22%
Change in Net Assets from Operations	77,622	70,042	7,580	
Investment Income (Net of Fees)	1,459	-	1,459	
Unrealized Gains/(Losses) on Investment	53,501	-	53,501	
Change in Net Assets	\$ 132,582	\$ 70,042	\$ 62,540	

**National Association for Court Management
Financial Statements
May 31, 2021**

National Association for Court Management
Statement of Financial Position
As of May 31, 2021

ASSETS	
Cash and Cash Equivalents	\$ 177,506
Prepaid Expense	1,000
Investments	664,118
Capitalized Software Costs, net	370
TOTAL ASSETS	\$ 842,994
 LIABILITIES & NET ASSETS	
Liabilities	
Accounts Payable	\$ 510
Total Liabilities	510
 Net Assets	
Without donor restriction	
Unrestricted	836,755
Board Designated - Special Projects Fund	5,729
Total Net Assets	842,484
TOTAL LIABILITIES & NET ASSETS	\$ 842,994

These financial statements have not been subjected to an audit, review or compilation engagement, and no assurance is provided on them.

The accompanying notes are an integral part of these financial statements.

National Association for Court Management
Statement of Activities
For the Five Months Ended May 31, 2021

	Annual Conference	Midyear Conference	Communications	Membership	Guides	NCJFCJ	Special Project Fund	General Operations	Total YTD
4000 · Membership Dues/Regular	\$ -	\$ -	\$ -	\$ 85,670	\$ -	\$ -	\$ -	\$ -	\$ 85,670
4005 · Membership Dues/Associate	-	-	-	6,315	-	-	-	-	6,315
4010 · Membership Dues/Sustaining	-	-	-	2,500	-	-	-	-	2,500
4015 · Membership Dues/Retired	-	-	-	1,185	-	-	-	-	1,185
4025 · Membership Dues/Student	-	-	-	70	-	-	-	-	70
4030 · Membership Dues/DUAL	-	-	-	7,335	-	-	-	-	7,335
4040 · Membership Dues/Virtual	-	-	-	430	-	-	-	-	430
4050 · Scholarship Fund	-	-	-	-	-	-	245	-	245
4065 · Donations/Other	-	-	-	-	-	-	-	45,000	45,000
4070 · Interest Income/Regular	-	-	-	-	-	-	-	4	4
4090 · Fees and Registrations	99,980	1,300	-	-	-	-	-	-	101,280
4110 · Vendor Income	38,850	-	-	-	-	-	-	-	38,850
4120 · Sponsorship Income	29,000	-	5,000	-	-	-	-	-	34,000
4130 · Grant Income	4,492	-	-	-	-	4,888	-	-	9,380
4140 · Advertising Income	-	-	1,673	-	-	-	-	-	1,673
4150 · Publication Sales	-	-	190	-	65	-	-	-	255
Total Revenue	172,322	1,300	6,863	103,505	65	4,888	245	45,004	334,192
Expense									
5100 · Travel/General	- #	-	-	-	-	-	-	472	472
5105 · Travel/President	- #	-	-	-	-	-	-	257	257
5110 · Travel/Officer	- #	-	-	-	-	-	-	1,107	1,107
5125 · Travel/Association Serv.	- #	-	-	-	-	-	-	682	682
5130 · SJI Speaker Travel	491 #	-	-	-	-	-	-	-	491
5200 · Honoraria	1,250	-	-	-	-	-	-	-	1,250
5300 · Conference Expenses	9,093	-	-	-	-	-	-	-	9,093
6010 · Webinars	1,680	-	-	-	-	-	-	731	2,411
6200 · Postage	-	-	-	-	-	-	-	163	163
6300 · Printing/Photocopying	-	-	2,720	-	-	-	-	-	2,720
6600 · Consultant	-	-	-	-	-	6,141	-	859	7,000
6700 · Website Devp/Internet Exp	1,562	-	-	-	-	-	-	1,580	3,142
6800 · Credit Card Fees	-	-	-	-	-	-	-	5,966	5,966
6810 · Licenses & Fees	135	-	-	-	-	-	-	655	790
6820 · Admin Supp/Contract Fee	-	-	-	-	-	-	-	194,179	194,179
6950 · Depreciation	-	-	-	-	-	-	-	1,847	1,847
7030 · Grant Match-Admin Support	-	-	-	-	-	-	-	25,000	25,000
Total Expense	14,211	-	2,720	-	-	6,141	-	233,498	256,570
Change in Net Assets from Operations	158,111	1,300	4,143	103,505	65	(1,253)	245	(188,494)	77,622
Investment Income (Net of Fees)	-	-	-	-	-	-	-	1,459	1,459
Unrealized Gains/(Losses) on Investment	-	-	-	-	-	-	-	53,501	53,501
Change in Net Assets	\$ 158,111	\$ 1,300	\$ 4,143	\$ 103,505	\$ 65	\$ (1,253)	\$ 245	\$ (133,534)	132,582
Net Assets at beginning of year									709,902
Net Assets at end of year									\$ 842,484

These financial statements have not been subjected to an audit, review or compilation engagement, and no assurance is provided on them.
The accompanying notes are an integral part of these financial statements.

**National Association for Court Management
Notes to Financial Statements
For the Five Months Ended May 31, 2021**

Departures from Generally Accepted Accounting Principles (GAAP)

For the annual audit, National Association for Court Management (NACM) prepares financial statements and disclosures in compliance with generally accepted accounting principles (GAAP). For interim reporting, management has determined that the additional cost to prepare fully GAAP compliant interim financial reports outweighs the benefits and prefers to use the savings to support programmatic and operational expenditures. As a result, certain GAAP requirements are not incorporated in the interim financial statements. This is an acceptable and common practice used for the purpose of interim financial reporting for nonprofit organizations. The following lists the significant departures from GAAP for this set of interim financial statements:

1. Substantially all disclosures have been omitted.
2. The Statement of Cash Flows has been omitted.
3. Conference and membership dues revenues for the current year are recognized when received. Conference expenses for the current year are recognized when paid.
4. The Statement of Activities does not show functional expenses and we are not presenting a statement a functional expense. The Statement of Activities also does not show restricted net assets presented separately.

If the above departures from U.S. GAAP were included in the financial statements, they might influence the user's conclusions about the Organization's financial position, changes in net assets, and cash flows. Accordingly, these financial statements are not designed for those who are not informed about such matters.

These financial statements have not been subjected to an audit, review or compilation engagement, and no assurance is provided on them.

The accompanying notes are an integral part of these financial statements.

CHECKLIST
National Association for Court Management
General Ledger (Rev and Expenses Only)
May 31, 2021

Account	Class	Type	Date	Num	Adj	Name	Memo	Debit	Credit	Balance
4000 · Membership Dues/Regular										0.00
4000 · Membership Dues/Regular	3000 Membership	Deposit	01/08/2021	49553939		Justice Initiatives, Inc.		270.00		-270.00
4000 · Membership Dues/Regular	3000 Membership	Deposit	01/08/2021	5766		Court of Appeal		135.00		-405.00
4000 · Membership Dues/Regular	3000 Membership	Deposit	01/08/2021	144888059		PURRSUANT TO WARRANT OF RICHARD ECKSTROM COMPTROLLER		135.00		-540.00
4000 · Membership Dues/Regular	3000 Membership	Deposit	01/08/2021	119860		City of Riviera Beach		135.00		-675.00
4000 · Membership Dues/Regular	3000 Membership	Deposit	01/08/2021	926098		COUNTY CLERK RILEY COUNTY, KANSAS		135.00		-810.00
4000 · Membership Dues/Regular	3000 Membership	Deposit	01/08/2021	54297		MAKAH TRIBAL COUNCIL		135.00		-945.00
4000 · Membership Dues/Regular	3000 Membership	Deposit	01/08/2021	100692956		STATE OF SOUTH DAKOTA		135.00		-1,080.00
4000 · Membership Dues/Regular	3000 Membership	Deposit	01/08/2021	600035753		STATE OF SOUTH DAKOTA		135.00		-1,215.00
4000 · Membership Dues/Regular	3000 Membership	Deposit	01/08/2021	183485		Board of Commissioners Floyd County, Georgia		70.00		-1,285.00
4000 · Membership Dues/Regular	3000 Membership	Deposit	01/08/2021	691427		Calhoun County, Michigan		135.00		-1,420.00
4000 · Membership Dues/Regular	3000 Membership	Deposit	01/08/2021	125936827		STATE OF OREGON		135.00		-1,555.00
4000 · Membership Dues/Regular	3000 Membership	Deposit	01/08/2021			ACH Kuka - #152494		135.00		-1,690.00
4000 · Membership Dues/Regular	3000 Membership	Deposit	01/15/2021	458595		Northumberland County		270.00		-1,960.00
4000 · Membership Dues/Regular	3000 Membership	Deposit	01/15/2021	142909737		TEXAS COMPTROLLER OF PUBLIC ACCOUNTS		135.00		-2,095.00
4000 · Membership Dues/Regular	3000 Membership	Deposit	01/15/2021	261410		Louisiana Supreme Court		135.00		-2,230.00
4000 · Membership Dues/Regular	3000 Membership	Deposit	01/15/2021	527061		COUNTY OF OZAUKEE		135.00		-2,365.00
4000 · Membership Dues/Regular	3000 Membership	Deposit	01/15/2021	69137		STATE OF MISSISSIPPI, LEFLORE COUNTY		135.00		-2,500.00
4000 · Membership Dues/Regular	3000 Membership	Deposit	01/15/2021	861024		City of Mobile		135.00		-2,635.00
4000 · Membership Dues/Regular	3000 Membership	Deposit	01/15/2021	14833		THIRD JUDICIAL DISTRICT COURT		135.00		-2,770.00
4000 · Membership Dues/Regular	3000 Membership	Deposit	01/15/2021	6353		RICHARD L SAMSEL		135.00		-2,905.00
4000 · Membership Dues/Regular	3000 Membership	Deposit	01/15/2021	6704		CARLA A SMITH		50.00		-2,955.00
4000 · Membership Dues/Regular	3000 Membership	Deposit	01/15/2021	60958		HASKELL COUNTY		135.00		-3,090.00
4000 · Membership Dues/Regular	3000 Membership	Deposit	01/22/2021	97641		CITY OF SOUTHGATE		135.00		-3,225.00
4000 · Membership Dues/Regular	3000 Membership	Deposit	01/22/2021	23634836		COMMONWEALTH OF KENTUCKY DEPARTMENT OF THE TREASURY		135.00		-3,360.00
4000 · Membership Dues/Regular	3000 Membership	Deposit	01/22/2021	130412453		STATE CONTROLLER'S WARRANT		135.00		-3,495.00
4000 · Membership Dues/Regular	3000 Membership	Deposit	01/22/2021	107650		CITY OF MARYLAND HEIGHTS		135.00		-3,630.00
4000 · Membership Dues/Regular	3000 Membership	Deposit	01/22/2021	350281		STATE OF ILLINOIS, McLEAN COUNTY		135.00		-3,765.00
4000 · Membership Dues/Regular	3000 Membership	Deposit	01/22/2021	141272		GEARY COUNTY		135.00		-3,900.00
4000 · Membership Dues/Regular	3000 Membership	Deposit	01/22/2021	142632		STATE OF GEORGIA		135.00		-4,035.00
4000 · Membership Dues/Regular	3000 Membership	Deposit	01/29/2021	1578757		Finance department		135.00		-4,170.00
4000 · Membership Dues/Regular	3000 Membership	Deposit	01/29/2021	624828		City of Warren		135.00		-4,305.00
4000 · Membership Dues/Regular	3000 Membership	Deposit	01/29/2021	3127		Warren County		135.00		-4,440.00
4000 · Membership Dues/Regular	3000 Membership	Deposit	01/29/2021	909788		SAULT STE. MARIE TRIBE OF CHIPPEWA INDIANS		135.00		-4,575.00
4000 · Membership Dues/Regular	3000 Membership	Deposit	01/29/2021	1770951		CLARK COUNTY, NEVADA		135.00		-4,710.00
4000 · Membership Dues/Regular	3000 Membership	Deposit	01/29/2021	200141		Whitfield County		135.00		-4,845.00
4000 · Membership Dues/Regular	3000 Membership	Deposit	01/29/2021	299683		CITY OF DANVILLE		135.00		-4,980.00
4000 · Membership Dues/Regular	3000 Membership	Deposit	01/29/2021	626560		DEBRA BUCKNER		135.00		-5,115.00
4000 · Membership Dues/Regular	3000 Membership	General Journal	01/31/2021	JanGL06	√	Paypal Membership Dues		7,290.00		-12,405.00
4000 · Membership Dues/Regular	3000 Membership	Deposit	02/08/2021	1077532		Roger Reynolds, CPA		135.00		-12,540.00
4000 · Membership Dues/Regular	3000 Membership	Deposit	02/08/2021	2110290460		Auditor of State of Arkansas		135.00		-12,675.00
4000 · Membership Dues/Regular	3000 Membership	Deposit	02/08/2021	343925		Douglas County		135.00		-12,810.00
4000 · Membership Dues/Regular	3000 Membership	Deposit	02/08/2021	392502		City of Bremerton		135.00		-12,945.00
4000 · Membership Dues/Regular	3000 Membership	Deposit	02/08/2021	1321276		City of Jacksonville		135.00		-13,080.00
4000 · Membership Dues/Regular	3000 Membership	Deposit	02/08/2021	183599		County of Jefferson		135.00		-13,215.00
4000 · Membership Dues/Regular	3000 Membership	Deposit	02/08/2021	142334		City of NAPOLEON, OHIO		135.00		-13,350.00
4000 · Membership Dues/Regular	3000 Membership	Deposit	02/08/2021	718728		Cobb County Board of Commissinoers		405.00		-13,755.00
4000 · Membership Dues/Regular	3000 Membership	Deposit	02/08/2021	21010101		Colfax County Clerk		135.00		-13,890.00
4000 · Membership Dues/Regular	3000 Membership	Deposit	02/08/2021	4139		Michigan Court Admin Association		2,070.00		-15,960.00
4000 · Membership Dues/Regular	3000 Membership	Deposit	02/08/2021	4004		Gregory August Lambard		115.00		-16,075.00
4000 · Membership Dues/Regular	3000 Membership	Deposit	02/16/2021	1774143		Clark County, Naved		135.00		-16,210.00
4000 · Membership Dues/Regular	3000 Membership	Deposit	02/16/2021	358456		Cherokee County Board of Commissioners		135.00		-16,345.00
4000 · Membership Dues/Regular	3000 Membership	Deposit	02/16/2021	5866		Patricia Tobias		135.00		-16,480.00
4000 · Membership Dues/Regular	3000 Membership	Deposit	02/16/2021	96341		City Of Warren		135.00		-16,615.00
4000 · Membership Dues/Regular	3000 Membership	Deposit	02/16/2021	985598		Mahoning County, Youngstown		135.00		-16,750.00
4000 · Membership Dues/Regular	3000 Membership	Deposit	02/16/2021	985586		Ralph T. Meacham		135.00		-16,885.00
4000 · Membership Dues/Regular	3000 Membership	Deposit	02/16/2021	71931		Buchanan County		135.00		-17,020.00
4000 · Membership Dues/Regular	3000 Membership	Deposit	02/16/2021	476130		City of Livonia		135.00		-17,155.00
4000 · Membership Dues/Regular	3000 Membership	Deposit	02/16/2021	120771269		County Treasurer of the County of Dallas		135.00		-17,290.00
4000 · Membership Dues/Regular	3000 Membership	Deposit	02/16/2021	202108		City of Joplin		135.00		-17,425.00
4000 · Membership Dues/Regular	3000 Membership	Deposit	02/16/2021	1319008		Metropolitan Government of Nashville and Davidson County		135.00		-17,560.00
4000 · Membership Dues/Regular	3000 Membership	Deposit	02/16/2021	1408076120		State fo Florida		270.00		-17,830.00
4000 · Membership Dues/Regular	3000 Membership	Deposit	02/16/2021	9415		City of Prairie View		135.00		-17,965.00
4000 · Membership Dues/Regular	3000 Membership	Deposit	02/16/2021	184969		Michael Malone		135.00		-18,100.00
4000 · Membership Dues/Regular	3000 Membership	Deposit	02/16/2021	209289		Dominique Herdeman		135.00		-18,235.00
4000 · Membership Dues/Regular	3000 Membership	Deposit	02/16/2021	1580736		Finance Department		405.00		-18,640.00
4000 · Membership Dues/Regular	3000 Membership	Deposit	02/22/2021			MN State-MMB		135.00		-18,775.00
4000 · Membership Dues/Regular	3000 Membership	Deposit	02/25/2021			MN State-MMB		495.00		-19,270.00
4000 · Membership Dues/Regular	3000 Membership	General Journal	02/28/2021	FebGL06	√	Paypal Membership Dues		9,425.00		-28,695.00
4000 · Membership Dues/Regular	3000 Membership	General Journal	02/28/2021	FebGL11	√	2020 Deferred Membership Recognized		8,960.00		-37,655.00
4000 · Membership Dues/Regular	3000 Membership	Deposit	03/01/2021	718775		National Ceneter for State Courts		135.00		-37,790.00
4000 · Membership Dues/Regular	3000 Membership	Deposit	03/01/2021	339645		City of Gainesville		135.00		-37,925.00
4000 · Membership Dues/Regular	3000 Membership	Deposit	03/01/2021	0811713		State of Florida		540.00		-38,465.00
4000 · Membership Dues/Regular	3000 Membership	Deposit	03/01/2021	36718		Treasurer of Midland County		270.00		-38,735.00
4000 · Membership Dues/Regular	3000 Membership	Deposit	03/01/2021	61877		Ness County		135.00		-38,870.00
4000 · Membership Dues/Regular	3000 Membership	Deposit	03/01/2021	78183		Butler County Treasurer		135.00		-39,005.00
4000 · Membership Dues/Regular	3000 Membership	Deposit	03/01/2021	12114		Twenty-Sixth Judicial District Court		135.00		-39,140.00

4000 · Membership Dues/Regular	3000 Membership	Deposit	03/01/2021	719703		COBB County Board of Commissioners	135.00	-39,275.00
4000 · Membership Dues/Regular	3000 Membership	Deposit	03/01/2021	368148		Franklin County	135.00	-39,410.00
4000 · Membership Dues/Regular	3000 Membership	Deposit	03/01/2021	AC1151287		Susan A. Medoz	135.00	-39,545.00
4000 · Membership Dues/Regular	3000 Membership	Deposit	03/01/2021	2030843		Dusty Rhodes	135.00	-39,680.00
4000 · Membership Dues/Regular	3000 Membership	Deposit	03/01/2021	71682		National Ass for Court Management	270.00	-39,950.00
4000 · Membership Dues/Regular	3000 Membership	Deposit	03/01/2021	2783890		City of Kansas City, Missouri	135.00	-40,085.00
4000 · Membership Dues/Regular	3000 Membership	Deposit	03/01/2021	379746		City of Dearbon, Michigan	135.00	-40,220.00
4000 · Membership Dues/Regular	3000 Membership	Deposit	03/01/2021	2320		23'rd Judicial District Court	135.00	-40,355.00
4000 · Membership Dues/Regular	3000 Membership	Deposit	03/01/2021	171173		Muscogee Creek Nation	270.00	-40,625.00
4000 · Membership Dues/Regular	3000 Membership	Deposit	03/01/2021	287453		Count fo Lycoming Office of the Treasurer	135.00	-40,760.00
4000 · Membership Dues/Regular	3000 Membership	Deposit	03/01/2021	43666695		Judiciary Supreme Court	405.00	-41,165.00
4000 · Membership Dues/Regular	3000 Membership	Deposit	03/01/2021	12034644		Karl Keith	135.00	-41,300.00
4000 · Membership Dues/Regular	3000 Membership	Deposit	03/01/2021	349676		City of Birmingham	135.00	-41,435.00
4000 · Membership Dues/Regular	3000 Membership	Deposit	03/01/2021	5178743		DeKALB County	135.00	-41,570.00
4000 · Membership Dues/Regular	3000 Membership	Deposit	03/01/2021	2521		Kwame W Asante	115.00	-41,685.00
4000 · Membership Dues/Regular	3000 Membership	Deposit	03/01/2021	1778723		Clark County, Naveda	135.00	-41,820.00
4000 · Membership Dues/Regular	3000 Membership	Deposit	03/01/2021	1791440		MACOMB County	135.00	-41,955.00
4000 · Membership Dues/Regular	3000 Membership	Deposit	03/01/2021	20255885		Chesterfield County	135.00	-42,090.00
4000 · Membership Dues/Regular	3000 Membership	Deposit	03/01/2021	527981		City of Marietta/Board of Lights and Water Work	135.00	-42,225.00
4000 · Membership Dues/Regular	3000 Membership	Deposit	03/04/2021			MN State-MMB	135.00	-42,360.00
4000 · Membership Dues/Regular	3000 Membership	Deposit	03/05/2021	718811		Michael L Buenger	135.00	-42,495.00
4000 · Membership Dues/Regular	3000 Membership	Deposit	03/05/2021	2021-02181		Patty Weeks	135.00	-42,630.00
4000 · Membership Dues/Regular	3000 Membership	Deposit	03/05/2021	2943984		Clay Bowman	135.00	-42,765.00
4000 · Membership Dues/Regular	3000 Membership	Deposit	03/05/2021	10082685		Holly H Elomina	135.00	-42,900.00
4000 · Membership Dues/Regular	3000 Membership	Deposit	03/05/2021	646476		Andrew M Thalhammer	135.00	-43,035.00
4000 · Membership Dues/Regular	3000 Membership	Deposit	03/05/2021	225		Lakeshia Williams	135.00	-43,170.00
4000 · Membership Dues/Regular	3000 Membership	Deposit	03/05/2021	2001126704		Robert L Padilla	135.00	-43,305.00
4000 · Membership Dues/Regular	3000 Membership	Deposit	03/05/2021	2001126704		Maria I Dominguez	135.00	-43,440.00
4000 · Membership Dues/Regular	3000 Membership	Deposit	03/05/2021	1779708		Terri A. March	135.00	-43,575.00
4000 · Membership Dues/Regular	3000 Membership	Deposit	03/05/2021	2001128094		Melissa M Garcia	135.00	-43,710.00
4000 · Membership Dues/Regular	3000 Membership	Deposit	03/05/2021	125981204		Barbara Marcille	135.00	-43,845.00
4000 · Membership Dues/Regular	3000 Membership	Deposit	03/05/2021	01792251		Thomas F Blohm	135.00	-43,980.00
4000 · Membership Dues/Regular	3000 Membership	Deposit	03/05/2021	648567		Brian M Debo	135.00	-44,115.00
4000 · Membership Dues/Regular	3000 Membership	Deposit	03/05/2021	8443		Lynette M Ward	135.00	-44,250.00
4000 · Membership Dues/Regular	3000 Membership	Deposit	03/05/2021	497084		Brian K Hart	135.00	-44,385.00
4000 · Membership Dues/Regular	3000 Membership	Deposit	03/05/2021	142670		William Simmons	135.00	-44,520.00
4000 · Membership Dues/Regular	3000 Membership	Deposit	03/12/2021	92245		Hancock County Board of Supervisors	135.00	-44,655.00
4000 · Membership Dues/Regular	3000 Membership	Deposit	03/12/2021	1855		Kenton K. Vanzandt	135.00	-44,790.00
4000 · Membership Dues/Regular	3000 Membership	Deposit	03/12/2021	355066		City of Columbus	135.00	-44,925.00
4000 · Membership Dues/Regular	3000 Membership	Deposit	03/12/2021	2284544		County Cle	135.00	-45,060.00
4000 · Membership Dues/Regular	3000 Membership	Deposit	03/12/2021	178695		Sarpy County Imprest Payables	135.00	-45,195.00
4000 · Membership Dues/Regular	3000 Membership	Deposit	03/12/2021	203442		First Judicial District, Judicial Procurement	540.00	-45,735.00
4000 · Membership Dues/Regular	3000 Membership	Deposit	03/12/2021	157294		State of Gerogia	135.00	-45,870.00
4000 · Membership Dues/Regular	3000 Membership	Deposit	03/12/2021	715555		Matthew W. Gearhardt	135.00	-46,005.00
4000 · Membership Dues/Regular	3000 Membership	Deposit	03/12/2021	8522		City Court of Opelousas	135.00	-46,140.00
4000 · Membership Dues/Regular	3000 Membership	Deposit	03/12/2021	255122		Office of the Treasurer greene county Missouri	135.00	-46,275.00
4000 · Membership Dues/Regular	3000 Membership	Deposit	03/12/2021	142686		State of Georgia	135.00	-46,410.00
4000 · Membership Dues/Regular	3000 Membership	Deposit	03/12/2021	595837		City of Dayton, Ohio	135.00	-46,545.00
4000 · Membership Dues/Regular	3000 Membership	Deposit	03/12/2021	965512		Greene County Auditor	135.00	-46,680.00
4000 · Membership Dues/Regular	3000 Membership	Deposit	03/19/2021	99322		Macon-Bibb County	135.00	-46,815.00
4000 · Membership Dues/Regular	3000 Membership	Deposit	03/19/2021	43855445		Judiciary/Supreme Court	135.00	-46,950.00
4000 · Membership Dues/Regular	3000 Membership	Deposit	03/19/2021	718856		National Center for State Courts	135.00	-47,085.00
4000 · Membership Dues/Regular	3000 Membership	Deposit	03/19/2021	141803		Geary County	135.00	-47,220.00
4000 · Membership Dues/Regular	3000 Membership	Deposit	03/19/2021	3816191		Kitsap County State of Washington	135.00	-47,355.00
4000 · Membership Dues/Regular	3000 Membership	Deposit	03/19/2021	249166		31 Division Street Coldwater	135.00	-47,490.00
4000 · Membership Dues/Regular	3000 Membership	Deposit	03/19/2021	39748		Texas Municipal Courts	135.00	-47,625.00
4000 · Membership Dues/Regular	3000 Membership	Deposit	03/19/2021	2035005		Dusty Rhodes	135.00	-47,760.00
4000 · Membership Dues/Regular	3000 Membership	Deposit	03/19/2021	1263715		Linda L. Fraley	135.00	-47,895.00
4000 · Membership Dues/Regular	3000 Membership	Deposit	03/19/2021	926572		County Clerk, Riley County, Kansas	135.00	-48,030.00
4000 · Membership Dues/Regular	3000 Membership	Deposit	03/19/2021	185040		Clark county Auditor	135.00	-48,165.00
4000 · Membership Dues/Regular	3000 Membership	Deposit	03/26/2021	146685		City of Alamosa	135.00	-48,300.00
4000 · Membership Dues/Regular	3000 Membership	Deposit	03/26/2021	646991		County of Kent	135.00	-48,435.00
4000 · Membership Dues/Regular	3000 Membership	Deposit	03/26/2021	373788C		State of Washington	135.00	-48,570.00
4000 · Membership Dues/Regular	3000 Membership	Deposit	03/26/2021	489268		City of Lee's Summit	135.00	-48,705.00
4000 · Membership Dues/Regular	3000 Membership	Deposit	03/26/2021	5180186		Dekalb County	270.00	-48,975.00
4000 · Membership Dues/Regular	3000 Membership	Deposit	03/26/2021	357161		City of Columbus, Ohio	405.00	-49,380.00
4000 · Membership Dues/Regular	3000 Membership	Deposit	03/26/2021	2030550		Clark County	135.00	-49,515.00
4000 · Membership Dues/Regular	3000 Membership	General Journal	03/31/2021	MarchGL06	√	Paypal Membership Dues	8,715.00	-58,230.00
4000 · Membership Dues/Regular	3000 Membership	Deposit	04/05/2021	423712		Melissa A. Betz, Audtior	135.00	-58,365.00
4000 · Membership Dues/Regular	3000 Membership	Deposit	04/05/2021	8867		16th Judicial District Court	135.00	-58,500.00
4000 · Membership Dues/Regular	3000 Membership	Deposit	04/05/2021	466653		County of La Cross	135.00	-58,635.00
4000 · Membership Dues/Regular	3000 Membership	Deposit	04/05/2021	498213		Chatham County, GA Department of Finance	135.00	-58,770.00
4000 · Membership Dues/Regular	3000 Membership	Deposit	04/05/2021	1079787		Butler County Auditor	135.00	-58,905.00
4000 · Membership Dues/Regular	3000 Membership	Deposit	04/05/2021	13365177		State of Utah	135.00	-59,040.00
4000 · Membership Dues/Regular	3000 Membership	Deposit	04/05/2021	1027274		City of Richmond, Virginia	135.00	-59,175.00
4000 · Membership Dues/Regular	3000 Membership	Deposit	04/05/2021	37349		Treasurer Of Midland County	270.00	-59,445.00
4000 · Membership Dues/Regular	3000 Membership	General Journal	04/07/2021	AprGL04	√	Paypal Echeck	655.00	-58,790.00
4000 · Membership Dues/Regular	3000 Membership	Deposit	04/12/2021	1790002		Clark County, Naved	135.00	-58,925.00
4000 · Membership Dues/Regular	3000 Membership	Deposit	04/12/2021	361742		Cherokee County Board of Commissioners	135.00	-59,060.00
4000 · Membership Dues/Regular	3000 Membership	Deposit	04/12/2021	40417351		Board of Supervisors of Yavapai County	135.00	-59,195.00
4000 · Membership Dues/Regular	3000 Membership	Deposit	04/12/2021	17306		Rice County Clerk	135.00	-59,330.00
4000 · Membership Dues/Regular	3000 Membership	Deposit	04/12/2021	10015732		County of New Kent	135.00	-59,465.00
4000 · Membership Dues/Regular	3000 Membership	Deposit	04/12/2021	201183		City of O'Fallon	270.00	-59,735.00

4000 · Membership Dues/Regular	3000 Membership	Deposit	04/12/2021	1729772		Board of County Commissioners	135.00	-59,870.00
4000 · Membership Dues/Regular	3000 Membership	Deposit	04/12/2021	1729831		National Association for Court Management	135.00	-60,005.00
4000 · Membership Dues/Regular	3000 Membership	Deposit	04/12/2021	529783		City of Marietta/Board of Lights and Water	135.00	-60,140.00
4000 · Membership Dues/Regular	3000 Membership	Deposit	04/12/2021	305403		City of Kettering	135.00	-60,275.00
4000 · Membership Dues/Regular	3000 Membership	Deposit	04/12/2021	10339		Court of Appeal, Fifth Court	135.00	-60,410.00
4000 · Membership Dues/Regular	3000 Membership	Deposit	04/19/2021	2001137727		State of AEM Mexico	135.00	-60,545.00
4000 · Membership Dues/Regular	3000 Membership	Deposit	04/19/2021	723470		CODD County Board of Commissioners	135.00	-60,680.00
4000 · Membership Dues/Regular	3000 Membership	Deposit	04/19/2021	1279		Greacen Associates, LLC	135.00	-60,815.00
4000 · Membership Dues/Regular	3000 Membership	Deposit	04/19/2021	308735		City of Reno	135.00	-60,950.00
4000 · Membership Dues/Regular	3000 Membership	Deposit	04/19/2021	46157		The Treasurer of Cochise County	135.00	-61,085.00
4000 · Membership Dues/Regular	3000 Membership	Deposit	04/19/2021	433010		County of Bucks	135.00	-61,220.00
4000 · Membership Dues/Regular	3000 Membership	Deposit	04/19/2021	104951		William Jackson Schwab	135.00	-61,355.00
4000 · Membership Dues/Regular	3000 Membership	Deposit	04/19/2021	1295629		County of Bucks	405.00	-61,760.00
4000 · Membership Dues/Regular	3000 Membership	Deposit	04/26/2021	219203		City of Bentonville, Arkansas	135.00	-61,895.00
4000 · Membership Dues/Regular	3000 Membership	General Journal	04/30/2021	AprilGL05	√	Paypal Membership Dues	7,110.00	-69,005.00
4000 · Membership Dues/Regular	3000 Membership	Deposit	05/03/2021	25330		Juvenile Court-Jefferson Parish	270.00	-69,275.00
4000 · Membership Dues/Regular	3000 Membership	Deposit	05/03/2021	209797		Treasurer of Crawford County	115.00	-69,390.00
4000 · Membership Dues/Regular	3000 Membership	Deposit	05/03/2021	152825		Rockdale County BOC	135.00	-69,525.00
4000 · Membership Dues/Regular	3000 Membership	Deposit	05/03/2021	1325720		City of Jacksonville	270.00	-69,795.00
4000 · Membership Dues/Regular	3000 Membership	Deposit	05/03/2021	192152		County of ST. Joseph General Fund	115.00	-69,910.00
4000 · Membership Dues/Regular	3000 Membership	Deposit	05/03/2021	1210028839		Superior Court of California County of Humboldt	135.00	-70,045.00
4000 · Membership Dues/Regular	3000 Membership	Deposit	05/03/2021	203911		First Judicial District, Judicial Procurement	270.00	-70,315.00
4000 · Membership Dues/Regular	3000 Membership	Deposit	05/03/2021	718952		National Center for State Courts Williamsburg	135.00	-70,450.00
4000 · Membership Dues/Regular	3000 Membership	Deposit	05/03/2021	3510439		City of Detroit	135.00	-70,585.00
4000 · Membership Dues/Regular	3000 Membership	General Journal	05/03/2021	MayGL02	√	Paypal Echeck	250.00	-70,335.00
4000 · Membership Dues/Regular	3000 Membership	General Journal	05/06/2021	MayGL03	√	Paypal Echeck	650.00	-69,685.00
4000 · Membership Dues/Regular	3000 Membership	Deposit	05/10/2021	3004553619		Commonwealth of Pennnsylvania Remittance advice	135.00	-69,820.00
4000 · Membership Dues/Regular	3000 Membership	Deposit	05/10/2021	539661		County of Monroe General Disabusement	135.00	-69,955.00
4000 · Membership Dues/Regular	3000 Membership	Deposit	05/10/2021	1326092		City of Jacksonville	135.00	-70,090.00
4000 · Membership Dues/Regular	3000 Membership	Deposit	05/10/2021	5182460		Dekalb County	270.00	-70,360.00
4000 · Membership Dues/Regular	3000 Membership	Deposit	05/10/2021	335813		Board of County Commissioners	135.00	-70,495.00
4000 · Membership Dues/Regular	3000 Membership	Deposit	05/10/2021	86953		Jefferson Parish Clerk of Court	135.00	-70,630.00
4000 · Membership Dues/Regular	3000 Membership	Deposit	05/10/2021	22575545		Minnesota Management and Budget	135.00	-70,765.00
4000 · Membership Dues/Regular	3000 Membership	Deposit	05/10/2021	434238C		State of Washington	135.00	-70,900.00
4000 · Membership Dues/Regular	3000 Membership	Deposit	05/10/2021	20932627		Ada County, Idaho	135.00	-71,035.00
4000 · Membership Dues/Regular	3000 Membership	Deposit	05/10/2021	640983		Grays Harbor County	135.00	-71,170.00
4000 · Membership Dues/Regular	3000 Membership	Deposit	05/10/2021	262629		Louisiana Supreme Court	135.00	-71,305.00
4000 · Membership Dues/Regular	3000 Membership	Deposit	05/10/2021	797534		County of Ingham	135.00	-71,440.00
4000 · Membership Dues/Regular	3000 Membership	Deposit	05/17/2021	894194		Texas State University	135.00	-71,575.00
4000 · Membership Dues/Regular	3000 Membership	Deposit	05/17/2021	157512		State of Georgia	135.00	-71,710.00
4000 · Membership Dues/Regular	3000 Membership	Deposit	05/17/2021	12050893		Montgomery County Auditor	135.00	-71,845.00
4000 · Membership Dues/Regular	3000 Membership	Deposit	05/17/2021	1229852		Travis County Treasurer	135.00	-71,980.00
4000 · Membership Dues/Regular	3000 Membership	Deposit	05/17/2021	84077		City Of Picayune	135.00	-72,115.00
4000 · Membership Dues/Regular	3000 Membership	Deposit	05/17/2021	43978		Crook County	135.00	-72,250.00
4000 · Membership Dues/Regular	3000 Membership	Deposit	05/17/2021	487045		Portage County Auditor's Office	135.00	-72,385.00
4000 · Membership Dues/Regular	3000 Membership	Deposit	05/17/2021	818728		Shelby County Government	135.00	-72,520.00
4000 · Membership Dues/Regular	3000 Membership	Deposit	05/17/2021	14654		Kristi Lynn Cox	135.00	-72,655.00
4000 · Membership Dues/Regular	3000 Membership	Deposit	05/17/2021	130574		City of Federal Heights	135.00	-72,790.00
4000 · Membership Dues/Regular	3000 Membership	Deposit	05/17/2021	363460		Cherokee County Board of Commissioners	135.00	-72,925.00
4000 · Membership Dues/Regular	3000 Membership	Deposit	05/17/2021	20128740		Franklin County, Ohio	270.00	-73,195.00
4000 · Membership Dues/Regular	3000 Membership	Deposit	05/17/2021	597618		Cindy Yeatts Brown	135.00	-73,330.00
4000 · Membership Dues/Regular	3000 Membership	Deposit	05/19/2021			MN State-MMB	135.00	-73,465.00
4000 · Membership Dues/Regular	3000 Membership	Deposit	05/24/2021	143490042		Texas Comptroller of Public Accounts	135.00	-73,600.00
4000 · Membership Dues/Regular	3000 Membership	Deposit	05/24/2021	41100459301		City of Seattle	135.00	-73,735.00
4000 · Membership Dues/Regular	3000 Membership	Deposit	05/24/2021	12051343		Karl Keith Montgomery County Auditor	135.00	-73,870.00
4000 · Membership Dues/Regular	3000 Membership	Deposit	05/24/2021	511402		St. Charles County Government	135.00	-74,005.00
4000 · Membership Dues/Regular	3000 Membership	Deposit	05/24/2021	2001144269		State of Aem Mexico	135.00	-74,140.00
4000 · Membership Dues/Regular	3000 Membership	Deposit	05/24/2021	2952170		Dylan Osborne Treasurer of Harris County, Texas	135.00	-74,275.00
4000 · Membership Dues/Regular	3000 Membership	Deposit	05/24/2021	2797223		City of Kansas City, Missouri	135.00	-74,410.00
4000 · Membership Dues/Regular	3000 Membership	Deposit	05/24/2021	5183405		DeKALB County	135.00	-74,545.00
4000 · Membership Dues/Regular	3000 Membership	Deposit	05/24/2021	31120		District Court	135.00	-74,680.00
4000 · Membership Dues/Regular	3000 Membership	Deposit	05/24/2021	174329		Berkeley County Government	135.00	-74,815.00
4000 · Membership Dues/Regular	3000 Membership	Deposit	05/24/2021	141137452		State of Florida	270.00	-75,085.00
4000 · Membership Dues/Regular	3000 Membership	Deposit	05/24/2021	903088095		Carson City	135.00	-75,220.00
4000 · Membership Dues/Regular	3000 Membership	Deposit	05/28/2021	123139		The City of Findlay	135.00	-75,355.00
4000 · Membership Dues/Regular	3000 Membership	Deposit	05/28/2021	1223883		County of Washington	135.00	-75,490.00
4000 · Membership Dues/Regular	3000 Membership	Deposit	05/28/2021	107627		City of Wyoming	135.00	-75,625.00
4000 · Membership Dues/Regular	3000 Membership	Deposit	05/28/2021	142824		State of Gergia	135.00	-75,760.00
4000 · Membership Dues/Regular	3000 Membership	Deposit	05/28/2021	379386		Coweta County, Georgia	135.00	-75,895.00
4000 · Membership Dues/Regular	3000 Membership	Deposit	05/28/2021	656125		Jefferson County Auditor	135.00	-76,030.00
4000 · Membership Dues/Regular	3000 Membership	Deposit	05/28/2021	126044520		State of Oregon	1,080.00	-77,110.00
4000 · Membership Dues/Regular	3000 Membership	Deposit	05/28/2021	566021		Douglas County, Nebraska	135.00	-77,245.00
4000 · Membership Dues/Regular	3000 Membership	General Journal	05/28/2021	MayGL05	√	Paypal Membership Dues	8,155.00	-85,400.00
4000 · Membership Dues/Regular	3000 Membership	General Journal	05/28/2021	MayGL05	√	Paypal Membership Dues	270.00	-85,670.00
Total 4000 · Membership Dues/Regular							1,555.00	87,225.00
4005 · Membership Dues/Associate								0.00
4005 · Membership Dues/Associate	3000 Membership	Deposit	01/22/2021	94273830		St. Louis County Treasurer	135.00	-135.00
4005 · Membership Dues/Associate	3000 Membership	Deposit	01/29/2021	225487		Paulding County Board of Commissioners	135.00	-270.00
4005 · Membership Dues/Associate	3000 Membership	Deposit	01/29/2021	49959666		Justice Initiatives, Inc.	135.00	-405.00
4005 · Membership Dues/Associate	3000 Membership	General Journal	01/31/2021	JanGL06	√	Paypal Membership Dues	1,080.00	-1,485.00
4005 · Membership Dues/Associate	3000 Membership	General Journal	02/28/2021	FebGL06	√	Paypal Membership Dues	1,215.00	-2,700.00
4005 · Membership Dues/Associate	3000 Membership	Deposit	03/01/2021	353		Gordon M. Griller Helen M.Griller	135.00	-2,835.00
4005 · Membership Dues/Associate	3000 Membership	Deposit	03/01/2021	2628		The Family Court of East Baton Rouge Parish	135.00	-2,970.00

4005 · Membership Dues/Associate	3000 Membership	Deposit	03/01/2021	55000399		Pioneer Technology Group LLC	135.00	-3,105.00
4005 · Membership Dues/Associate	3000 Membership	Deposit	03/26/2021	150760		State of Mississippi-Rankin County	135.00	-3,240.00
4005 · Membership Dues/Associate	3000 Membership	Deposit	03/26/2021	489267		City of Lee's Summit	135.00	-3,375.00
4005 · Membership Dues/Associate	3000 Membership	General Journal	03/31/2021	MarchGL06	√	Paypal Membership Dues	1,080.00	-4,455.00
4005 · Membership Dues/Associate	3000 Membership	Deposit	04/19/2021	158771		County of Somerst	135.00	-4,590.00
4005 · Membership Dues/Associate	3000 Membership	General Journal	04/30/2021	AprilGL05	√	Paypal Membership Dues	1,590.00	-6,180.00
4005 · Membership Dues/Associate	3000 Membership	Deposit	05/03/2021	2041336		Dusty Rhodes	135.00	-6,315.00
Total 4005 · Membership Dues/Associate							0.00	6,315.00
4010 · Membership Dues/Sustaining								-6,315.00
4010 · Membership Dues/Sustaining	3000 Membership	General Journal	01/31/2021	JanGL06	√	Paypal Membership Dues	500.00	-500.00
4010 · Membership Dues/Sustaining	3000 Membership	Deposit	02/16/2021	217331		Ontario Systems, LLC	500.00	-1,000.00
4010 · Membership Dues/Sustaining	3000 Membership	General Journal	02/28/2021	FebGL06	√	Paypal Membership Dues	500.00	-1,500.00
4010 · Membership Dues/Sustaining	3000 Membership	General Journal	03/31/2021	MarchGL06	√	Paypal Membership Dues	500.00	-2,000.00
4010 · Membership Dues/Sustaining	3000 Membership	General Journal	04/30/2021	AprilGL05	√	Paypal Membership Dues	500.00	-2,500.00
Total 4010 · Membership Dues/Sustaining							0.00	2,500.00
4015 · Membership Dues/Retired								-2,500.00
4015 · Membership Dues/Retired	3000 Membership	Deposit	01/15/2021	164835		CITY OF PERRYSBURG	135.00	-135.00
4015 · Membership Dues/Retired	3000 Membership	Deposit	01/29/2021	2233		THOMAS F LANE DANIELLE S LANE	50.00	-185.00
4015 · Membership Dues/Retired	3000 Membership	General Journal	01/31/2021	JanGL06	√	Paypal Membership Dues	200.00	-385.00
4015 · Membership Dues/Retired	3000 Membership	General Journal	02/28/2021	FebGL06	√	Paypal Membership Dues	100.00	-485.00
4015 · Membership Dues/Retired	3000 Membership	General Journal	02/28/2021	FebGL11	√	2020 Deferred Membership Recognized	50.00	-535.00
4015 · Membership Dues/Retired	3000 Membership	General Journal	03/31/2021	MarchGL06	√	Paypal Membership Dues	150.00	-685.00
4015 · Membership Dues/Retired	3000 Membership	Deposit	04/05/2021	1604		Claudia J. Fernandes	50.00	-735.00
4015 · Membership Dues/Retired	3000 Membership	Deposit	04/12/2021	6156		Richard B. Hoffman	50.00	-785.00
4015 · Membership Dues/Retired	3000 Membership	General Journal	04/30/2021	AprilGL05	√	Paypal Membership Dues	300.00	-1,085.00
4015 · Membership Dues/Retired	3000 Membership	Deposit	05/28/2021	163		Linda L Jacobson	50.00	-1,135.00
4015 · Membership Dues/Retired	3000 Membership	General Journal	05/28/2021	MayGL05	√	Paypal Membership Dues	50.00	-1,185.00
Total 4015 · Membership Dues/Retired							0.00	1,185.00
4025 · Membership Dues/Student								-1,185.00
4025 · Membership Dues/Student	3000 Membership	General Journal	05/28/2021	MayGL05	√	Paypal Membership Dues	70.00	-70.00
Total 4025 · Membership Dues/Student							0.00	70.00
4030 · Membership Dues/DUAL								-70.00
4030 · Membership Dues/DUAL	3000 Membership	Deposit	01/15/2021	4136		MICHIGAN COURT ADMIN ASSA	690.00	-690.00
4030 · Membership Dues/DUAL	3000 Membership	Deposit	01/29/2021	4138		MICHIGAN COURT ADMIN ASSN	920.00	-1,610.00
4030 · Membership Dues/DUAL	3000 Membership	General Journal	01/31/2021	JanGL06	√	Paypal Membership Dues	115.00	-1,725.00
4030 · Membership Dues/DUAL	3000 Membership	General Journal	02/28/2021	FebGL06	√	Paypal Membership Dues	345.00	-2,070.00
4030 · Membership Dues/DUAL	3000 Membership	General Journal	02/28/2021	FebGL11	√	2020 Deferred Membership Recognized	115.00	-2,185.00
4030 · Membership Dues/DUAL	3000 Membership	Deposit	03/05/2021	4140		Michelle M Marcero	115.00	-2,300.00
4030 · Membership Dues/DUAL	3000 Membership	Deposit	03/05/2021	4140		Chad A Kewish	115.00	-2,415.00
4030 · Membership Dues/DUAL	3000 Membership	Deposit	03/05/2021	4140		Carrie E Smietanka-Haney	115.00	-2,530.00
4030 · Membership Dues/DUAL	3000 Membership	Deposit	03/05/2021	4140		Brian M Henderson	115.00	-2,645.00
4030 · Membership Dues/DUAL	3000 Membership	Deposit	03/12/2021	1591926		County of Montgomery	120.00	-2,765.00
4030 · Membership Dues/DUAL	3000 Membership	Deposit	03/12/2021	28608		County of Chester	115.00	-2,880.00
4030 · Membership Dues/DUAL	3000 Membership	Deposit	03/19/2021	28921		County of Chester	115.00	-2,995.00
4030 · Membership Dues/DUAL	3000 Membership	Deposit	03/19/2021	203577		First Judicial District, Judicial Procurement	115.00	-3,110.00
4030 · Membership Dues/DUAL	3000 Membership	Deposit	03/19/2021	2110340603		Auditor of State of Arkansas	115.00	-3,225.00
4030 · Membership Dues/DUAL	3000 Membership	General Journal	03/31/2021	MarchGL06	√	Paypal Membership Dues	1,785.00	-5,010.00
4030 · Membership Dues/DUAL	3000 Membership	Deposit	04/12/2021	2614338		County of Allegheny	115.00	-5,125.00
4030 · Membership Dues/DUAL	3000 Membership	Deposit	04/19/2021	4142		Michigan Court Admin Assn	345.00	-5,470.00
4030 · Membership Dues/DUAL	3000 Membership	Deposit	04/26/2021	718939		National Center for State Courts Williamsburg	115.00	-5,585.00
4030 · Membership Dues/DUAL	3000 Membership	Deposit	04/26/2021	1794208		Clark County, Nevada	115.00	-5,700.00
4030 · Membership Dues/DUAL	3000 Membership	General Journal	04/30/2021	AprilGL05	√	Paypal Membership Dues	690.00	-6,390.00
4030 · Membership Dues/DUAL	3000 Membership	Deposit	05/03/2021	104892		County of Forest	135.00	-6,525.00
4030 · Membership Dues/DUAL	3000 Membership	Deposit	05/10/2021	9954193		State of Arizona	115.00	-6,640.00
4030 · Membership Dues/DUAL	3000 Membership	Deposit	05/10/2021	4795		Mark M Singer Angela S Singer	120.00	-6,760.00
4030 · Membership Dues/DUAL	3000 Membership	Deposit	05/24/2021	4145		Michigan Court Admin Assn	115.00	-6,875.00
4030 · Membership Dues/DUAL	3000 Membership	Deposit	05/28/2021	3275		Susan Braniecki	115.00	-6,990.00
4030 · Membership Dues/DUAL	3000 Membership	General Journal	05/28/2021	MayGL05	√	Paypal Membership Dues	345.00	-7,335.00
Total 4030 · Membership Dues/DUAL							0.00	7,335.00
4040 · Membership Dues/Virtual								-7,335.00
4040 · Membership Dues/Virtual	3000 Membership	General Journal	01/31/2021	JanGL06	√	Paypal Membership Dues	160.00	-160.00
4040 · Membership Dues/Virtual	3000 Membership	General Journal	02/28/2021	FebGL11	√	2020 Deferred Membership Recognized	135.00	-295.00
4040 · Membership Dues/Virtual	3000 Membership	Deposit	03/19/2021	497986		Chatham County, GA	135.00	-430.00
Total 4040 · Membership Dues/Virtual							0.00	430.00
4050 · Scholarship Fund								-430.00
4050 · Scholarship Fund	6000 Restricted-Special PJ Fund	General Journal	02/21/2021	FebGL04	√	Amazon	8.25	-8.25
4050 · Scholarship Fund	6000 Restricted-Special PJ Fund	General Journal	02/28/2021	FebGL06	√	Paypal Donations	185.00	-193.25
4050 · Scholarship Fund	6000 Restricted-Special PJ Fund	General Journal	03/01/2021	MarchGL09	√	Amazon	3.17	-196.42
4050 · Scholarship Fund	6000 Restricted-Special PJ Fund	General Journal	03/29/2021	MarchGL08	√	Amazon	22.07	-218.49
4050 · Scholarship Fund	6000 Restricted-Special PJ Fund	General Journal	04/29/2021	AprilGL02	√	Amazon	4.85	-223.34
4050 · Scholarship Fund	6000 Restricted-Special PJ Fund	General Journal	05/24/2021	MayGL05	√	Amazon	21.37	-244.71
Total 4050 · Scholarship Fund							0.00	244.71
4065 · Donations/Other								-244.71
4065 · Donations/Other	9000 Management and General	Bill	01/01/2021	2021-01-08	NCSC	Revenue	7,500.00	-7,500.00
4065 · Donations/Other	9000 Management and General	Bill	02/08/2021	2021-02-08	NCSC	Revnuue	7,500.00	-15,000.00
4065 · Donations/Other	9000 Management and General	Bill	03/08/2021	2021-03-08	NCSC	Revnuue	7,500.00	-22,500.00
4065 · Donations/Other	9000 Management and General	Bill	04/08/2021	2021-04-08	NCSC	Revnuue	7,500.00	-30,000.00
4065 · Donations/Other	9000 Management and General	Bill	04/30/2021	2021-05-08	NCSC	Revnuue	7,500.00	-37,500.00
4065 · Donations/Other	9000 Management and General	Bill	05/31/2021	2021-06-08	NCSC	Revnuue	7,500.00	-45,000.00
Total 4065 · Donations/Other							0.00	45,000.00
4070 · Interest Income/Regular								-45,000.00
4070 · Interest Income/Regular	9000 Management and General	General Journal	01/31/2021	JanGL01	√	Operating Interest	0.78	-0.78
4070 · Interest Income/Regular	9000 Management and General	General Journal	02/26/2021	FebGL01	√	Operating Interest	0.84	-1.62

4070 · Interest Income/Regular	9000 Management and General	General Journal	02/28/2021	FebGL09	✓	Dividend/Capital Gain January	254.13	-255.75	
4070 · Interest Income/Regular	9000 Management and General	General Journal	02/28/2021	FebGL09	✓	Dividend February	7.68	-263.43	
4070 · Interest Income/Regular	9000 Management and General	General Journal	03/31/2021	MarchGL01	✓	Operating Interest	0.85	-264.28	
4070 · Interest Income/Regular	9000 Management and General	General Journal	03/31/2021	MarGL09	✓	Dividend	1,177.34	-1,441.62	
4070 · Interest Income/Regular	9000 Management and General	General Journal	04/30/2021	AprilGL01	✓	Operating Interest	0.73	-1,442.35	
4070 · Interest Income/Regular	9000 Management and General	General Journal	04/30/2021	AprGL09	✓	Dividend	8.68	-1,451.03	
4070 · Interest Income/Regular	9000 Management and General	General Journal	05/28/2021	MayGL01	✓	Operating Interest	1.17	-1,452.20	
4070 · Interest Income/Regular	9000 Management and General	General Journal	05/31/2021	MayGL09	✓	Dividend	11.58	-1,463.78	
Total 4070 · Interest Income/Regular							0.00	1,463.78	-1,463.78
4080 · Unrealized Gain/Loss									0.00
4080 · Unrealized Gain/Loss	9000 Management and General	General Journal	02/28/2021	FebGL09	✓	Unrealized Gain/Loss January	2,880.14	2,880.14	
4080 · Unrealized Gain/Loss	9000 Management and General	General Journal	02/28/2021	FebGL09	✓	Unrealized Gain/Loss February		-11,710.05	
4080 · Unrealized Gain/Loss	9000 Management and General	General Journal	03/31/2021	MarGL09	✓	Unrealized Gain/Loss	14,590.19	-21,505.33	
4080 · Unrealized Gain/Loss	9000 Management and General	General Journal	04/30/2021	AprGL09	✓	Unrealized Gain/Loss	9,795.28	-46,994.77	
4080 · Unrealized Gain/Loss	9000 Management and General	General Journal	05/31/2021	MayGL09	✓	Unrealized Gain/Loss	25,489.44	-53,501.40	
Total 4080 · Unrealized Gain/Loss							2,880.14	56,381.54	-53,501.40
4090 · Fees and Registrations									0.00
4090 · Fees and Registrations	1500 Midyear Conference	General Journal	02/22/2021	FebGL06	✓	Paypal Refund	50.00	50.00	
4090 · Fees and Registrations	1500 Midyear Conference	General Journal	02/28/2021	FebGL06	✓	Paypal Fees and Registration		-635.00	
4090 · Fees and Registrations	1000 Annual Conference	General Journal	02/28/2021	FebGL11	✓	Thomas Reuters AC21 (deferred 2020)	685.00	-4,960.00	
4090 · Fees and Registrations	1500 Midyear Conference	Deposit	03/05/2021	02609404		County of Allegheny	4,325.00	-4,975.00	
4090 · Fees and Registrations	1500 Midyear Conference	General Journal	03/31/2021	MarchGL06	✓	Paypal Fees and Registration	15.00	-5,490.00	
4090 · Fees and Registrations	1500 Midyear Conference	General Journal	04/30/2021	AprilGL05	✓	Paypal Fees and Registration	515.00	-5,595.00	
4090 · Fees and Registrations	1000 Annual Conference	General Journal	04/30/2021	AprilGL05	✓	Paypal Fees and Registration	105.00	-5,845.00	
4090 · Fees and Registrations	1000 Annual Conference	Deposit	05/28/2021	271600		Unified Government of Athens-Clarke County	250.00	-6,095.00	
4090 · Fees and Registrations	1000 Annual Conference	Deposit	05/28/2021	53484256		National Assocation of State Judicial Educators	250.00	-6,745.00	
4090 · Fees and Registrations	1000 Annual Conference	General Journal	05/28/2021	MayGL05	✓	Paypal Fees and Registrations	650.00	-99,225.00	
4090 · Fees and Registrations	1500 Midyear Conference	General Journal	05/28/2021	MayGL05	✓	Paypal Fees and Registrations	92,480.00	-99,225.00	
4090 · Fees and Registrations	1000 Annual Conference	General Journal	05/28/2021	MayGL05	✓	Paypal Fees and Registrations	30.00	-99,255.00	
4090 · Fees and Registrations	1000 Annual Conference	General Journal	05/28/2021	MayGL05	✓	Paypal Fees and Registrations	75.00	-99,330.00	
4090 · Fees and Registrations	1000 Annual Conference	General Journal	05/28/2021	MayGL05	✓	Paypal Grant Income	1,950.00	-101,280.00	
Total 4090 · Fees and Registrations							50.00	101,330.00	-101,280.00
4110 · Vendor Income									0.00
4110 · Vendor Income	1000 Annual Conference	General Journal	02/28/2021	FebGL11	✓	Tybera Booth AC21 (deferred 2020)		-3,150.00	
4110 · Vendor Income	1000 Annual Conference	General Journal	02/28/2021	FebGL11	✓	JAVS Booth AC21 (deferred 2020)	3,150.00	-7,050.00	
4110 · Vendor Income	1000 Annual Conference	Deposit	05/17/2021	112346		Dewberry	3,900.00	-9,450.00	
4110 · Vendor Income	1000 Annual Conference	Deposit	05/17/2021	4221		Creek Technologies Company	2,400.00	-11,850.00	
4110 · Vendor Income	1000 Annual Conference	Deposit	05/24/2021	7651		Silling Associates, Inc.	2,400.00	-14,250.00	
4110 · Vendor Income	1000 Annual Conference	General Journal	05/28/2021	MayGL05	✓	Credit Collection Part BOOTH AC21	2,400.00	-16,650.00	
4110 · Vendor Income	1000 Annual Conference	General Journal	05/28/2021	MayGL05	✓	LexisNexis BOOTH AC21	2,400.00	-19,050.00	
4110 · Vendor Income	1000 Annual Conference	General Journal	05/28/2021	MayGL05	✓	Numi BOOTH AC21	2,400.00	-21,450.00	
4110 · Vendor Income	1000 Annual Conference	General Journal	05/28/2021	MayGL05	✓	Thomson Reuters SPONSOR AC21	2,400.00	-24,450.00	
4110 · Vendor Income	1000 Annual Conference	General Journal	05/28/2021	MayGL05	✓	Five Point BOOTH AC21	3,000.00	-26,850.00	
4110 · Vendor Income	1000 Annual Conference	General Journal	05/28/2021	MayGL05	✓	nCourt BOOTH AC21	2,400.00	-29,250.00	
4110 · Vendor Income	1000 Annual Conference	General Journal	05/28/2021	MayGL05	✓	WolfVision BOOTH AC21	2,400.00	-31,650.00	
4110 · Vendor Income	1000 Annual Conference	General Journal	05/28/2021	MayGL05	✓	eMoksha BOOTH AC21	2,400.00	-34,050.00	
4110 · Vendor Income	1000 Annual Conference	General Journal	05/28/2021	MayGL05	✓	Infax BOOTH AC21	2,400.00	-36,450.00	
4110 · Vendor Income	1000 Annual Conference	General Journal	05/28/2021	MayGL05	✓	MSB BOOTH AC21	2,400.00	-38,850.00	
Total 4110 · Vendor Income							0.00	38,850.00	-38,850.00
4120 · Sponsorship Income									0.00
4120 · Sponsorship Income	1000 Annual Conference	General Journal	02/28/2021	FebGL11	✓	Thomas Reuters AC21 (deferred 2020)	5,000.00	-5,000.00	
4120 · Sponsorship Income	1000 Annual Conference	General Journal	02/28/2021	FebGL11	✓	Journal Tech AC21 (deferred 2020)	14,000.00	-19,000.00	
4120 · Sponsorship Income	1000 Annual Conference	General Journal	02/28/2021	FebGL11	✓	AllianceOne AC21 (deferred 2020)	10,000.00	-29,000.00	
4120 · Sponsorship Income	2000 Communications	Deposit	05/10/2021	TYL0114164		Tyler Technologies Inc	2,500.00	-31,500.00	
4120 · Sponsorship Income	2000 Communications	Deposit	05/24/2021	TYL0114272		Tyler Technologies, Inc	2,500.00	-34,000.00	
Total 4120 · Sponsorship Income							0.00	34,000.00	-34,000.00
4130 · Grant Income									0.00
4130 · Grant Income	5800 WeToo Grant:5820 NCJFCJ	General Journal	05/04/2021	MayGL06	✓	PFS TREAS 310 MISC	4,887.66	-4,887.66	
4130 · Grant Income	1000 Annual Conference:1010 Annual Conf. - SJI Grant	General Journal	05/10/2021	MayGL07	✓	PFS TREAS 310 MISC	4,491.90	-9,379.56	
Total 4130 · Grant Income							0.00	9,379.56	-9,379.56
4140 · Advertising Income									0.00
4140 · Advertising Income	2000 Communications:2020 - Court Manager	General Journal	03/11/2021	MarchGL07	✓	Trapeze Software Payable National Court	742.50	-742.50	
4140 · Advertising Income	2000 Communications:2020 - Court Manager	Deposit	04/05/2021			Ontario Systems	930.00	-1,672.50	
Total 4140 · Advertising Income							0.00	1,672.50	-1,672.50
4150 · Publication Sales									0.00
4150 · Publication Sales	2000 Communications:2020 - Court Manager	Deposit	01/22/2021	732731		William S. Hein & Co., Inc.	95.00	-95.00	
4150 · Publication Sales	2000 Communications:2020 - Court Manager	General Journal	02/28/2021	FebGL06	✓	Paypal Membership Dues	95.00	-190.00	
4150 · Publication Sales	4000 Guides	General Journal	03/31/2021	MarchGL06	✓	Paypal Publication Sales	20.00	-210.00	
4150 · Publication Sales	4000 Guides	General Journal	05/28/2021	MayGL05	✓	Paypal Publication Sales	45.00	-255.00	
Total 4150 · Publication Sales							0.00	255.00	-255.00
5100 · Travel/General									0.00
5100 · Travel/General	9000 Management and General	Bill	05/06/2021	050621 CA_BOS	Griffin, Kathryn S.	NACM -Annual 2021 conference	472.40	472.40	
Total 5100 · Travel/General							472.40	0.00	472.40
5105 · Travel/President									0.00
5105 · Travel/President	9000 Management and General	Bill	05/06/2021	050621 CA_BOS	Griffin, Kathryn S.	Travel to NAPCO Conference	256.80	256.80	
Total 5105 · Travel/President							256.80	0.00	256.80
5110 · Travel/Officer									0.00
5110 · Travel/Officer	9000 Management and General	Bill	05/18/2021	051821 San Diego	Simmons, William	NACM Annual Conference	458.80	458.80	
5110 · Travel/Officer	9000 Management and General	Bill	05/31/2021	051721 San Diego	BeMent, Tracy J.	NACM AC 2021 travel	647.80	1,106.60	
Total 5110 · Travel/Officer							1,106.60	0.00	1,106.60
5125 · Travel/Association Serv.									0.00
5125 · Travel/Association Serv.	9000 Management and General	Bill	05/13/2021	Smith 051321	Smith, Stacey	NACM 2021 annual conference	682.40	682.40	
Total 5125 · Travel/Association Serv.							682.40	0.00	682.40

5130 · SJI Speaker Travel									0.00
5130 · SJI Speaker Travel	1000 Annual Conference	Bill	05/31/2021	OGrady Trvl 053121	Kevin O'Grady	Airfare for Speaker travel to AC 2021	490.95		490.95
Total 5130 · SJI Speaker Travel							490.95	0.00	490.95
5200 · Honoraria									0.00
5200 · Honoraria	1000 Annual Conference:1010 Annual Conf. - SJI Grant	Bill	03/18/2021	1886	Think Next, Act Now! LLC	AC21 Keynote Speaker Deposit	1,250.00		1,250.00
Total 5200 · Honoraria							1,250.00	0.00	1,250.00
5300 · Conference Expenses									0.00
5300 · Conference Expenses	1000 Annual Conference	General Journal	02/28/2021	FebGL12	✓	Town and Country San Diego AC21 deposit	5,000.00		5,000.00
5300 · Conference Expenses	1000 Annual Conference	Bill	03/10/2021	February 2021	Wells Fargo	refund for paper for swag boxes		72.00	4,928.00
5300 · Conference Expenses	1000 Annual Conference	Bill	04/26/2021	KA-6442	KitApps. Inc.	Multi-event APP	3,599.00		8,527.00
5300 · Conference Expenses	1000 Annual Conference	Bill	05/04/2021	071321	Music As You Like It Productions	DJ for Annual Conference social event (50% deposit)	547.50		9,074.50
5300 · Conference Expenses	1000 Annual Conference	Bill	05/28/2021	BT22001165A	Armtz Promotions	NACM name badge	18.58		9,093.08
Total 5300 · Conference Expenses							9,165.08	72.00	9,093.08
6010 · Webinars									0.00
6010 · Webinars	9000 Management and General	Bill	01/10/2021	Jan 2021	Wells Fargo	Go To Meetings (one month)	202.30		202.30
6010 · Webinars	9000 Management and General	Bill	01/10/2021	Jan 2021	Wells Fargo	Zoom subscription	2,155.72		2,358.02
6010 · Webinars	9000 Management and General	Bill	03/10/2021	February 2021	Wells Fargo	Larger zoom license	52.50		2,410.52
6010 · Webinars	9000 Management and General	General Journal	05/31/2021	MayGL10	✓	Reclass Zoom Subscription		1,679.90	730.62
6010 · Webinars	1000 Annual Conference:1010 Annual Conf. - SJI Grant	General Journal	05/31/2021	MayGL10	✓	Reclass Zoom Subscription	1,679.90		2,410.52
Total 6010 · Webinars							4,090.42	1,679.90	2,410.52
6200 · Postage									0.00
6200 · Postage	9000 Management and General	Bill	02/01/2021	USPS Feb 2021	NCSC	Postage for February 2021	46.41		46.41
6200 · Postage	9000 Management and General	Bill	02/05/2021	January2021-Postage	NCSC	January 2021 Postage	47.43		93.84
6200 · Postage	9000 Management and General	Bill	02/18/2021	UPS Feb 2021	NCSC	Feb 2021 UPS Postage	8.44		102.28
6200 · Postage	9000 Management and General	Bill	03/01/2021	March Postage 2021	NCSC	March Postage	27.01		129.29
6200 · Postage	9000 Management and General	Bill	04/01/2021	April 2021 Postage	NCSC	April postage & short .51 cents from March postage	34.17		163.46
Total 6200 · Postage							163.46	0.00	163.46
6300 · Printing/Photocopying									0.00
6300 · Printing/Photocopying	2000 Communications:2020 - Court Manager	Bill	02/23/2021	21-013	Mellen Street Creative	Web development-Court Manager 35.3-4	2,720.00		2,720.00
Total 6300 · Printing/Photocopying							2,720.00	0.00	2,720.00
6600 · Consultant									0.00
6600 · Consultant	9000 Management and General	Bill	03/10/2021	February 2021	Wells Fargo	survey monkey	408.00		408.00
6600 · Consultant	9000 Management and General	Bill	03/10/2021	February 2021	Wells Fargo	icontact increased plan	127.20		535.20
6600 · Consultant	9000 Management and General	Bill	03/10/2021	February 2021	Wells Fargo	icontact	852.00		1,387.20
6600 · Consultant	9000 Management and General	Bill	03/10/2021	February 2021	Wells Fargo	refund for Zoom charge for taxes		528.32	858.88
6600 · Consultant	5800 WeToo Grant:5820 NCJFCJ	Bill	03/29/2021	32720-012	NCJFCJ	NCJFCJ sub-recipient of WeToo Grant February 2021	546.49		1,405.37
6600 · Consultant	5800 WeToo Grant:5810 Futures Without Violence	Bill	04/23/2021	NACM-10	Futures Without Violence	SJI sub-recipient of WeToo Grant (invoice #10)	328.86		1,734.23
6600 · Consultant	5800 WeToo Grant:5820 NCJFCJ	Bill	04/23/2021	32720-011	NCJFCJ	NCJFCJ sub-recipient of WeToo Grant January 2021	1,144.25		2,878.48
6600 · Consultant	5800 WeToo Grant:5820 NCJFCJ	Bill	04/23/2021	32720-13	NCJFCJ	NCJFCJ sub-recipient of WeToo Grant March 2021	1,253.37		4,131.85
6600 · Consultant	5800 WeToo Grant:5810 Futures Without Violence	Bill	04/23/2021	NACM-11	Futures Without Violence	SJI sub-recipient of WeToo Grant (invoice #11)	1,259.92		5,391.77
6600 · Consultant	5800 WeToo Grant:5810 Futures Without Violence	Bill	04/23/2021	NACM-09	Futures Without Violence	SJI sub-recipient of WeToo Grant (invoice #9)	1,608.14		6,999.91
Total 6600 · Consultant							7,528.23	528.32	6,999.91
6700 · Website Devp/Internet Exp									0.00
6700 · Website Devp/Internet Exp	9000 Management and General	Bill	01/10/2021	Jan 2021	Wells Fargo	org domain registration	18.00		18.00
6700 · Website Devp/Internet Exp	9000 Management and General	Bill	03/02/2021	2010442A	Howell Creative Group	Website maintenance Jan-March 2021	1,562.00		1,580.00
6700 · Website Devp/Internet Exp	9000 Management and General	Bill	05/04/2021	2010442B	Howell Creative Group	Website maintenance May 2021	1,562.00		3,142.00
6700 · Website Devp/Internet Exp	9000 Management and General	General Journal	05/31/2021	MayGL10	✓	Reclass Howell		1,562.00	1,580.00
6700 · Website Devp/Internet Exp	1000 Annual Conference:1010 Annual Conf. - SJI Grant	General Journal	05/31/2021	MayGL10	✓	Reclass Howell	1,562.00		3,142.00
Total 6700 · Website Devp/Internet Exp							4,704.00	1,562.00	3,142.00
6800 · Credit Card Fees									0.00
6800 · Credit Card Fees	9000 Management and General	General Journal	01/31/2021	JanGL04	✓	Paypal Fees Jan	30.00		30.00
6800 · Credit Card Fees	9000 Management and General	General Journal	01/31/2021	JanGL06	✓	Bank Charges	277.09		307.09
6800 · Credit Card Fees	9000 Management and General	General Journal	02/03/2021	FebGL05	✓	Paypal Fee	30.00		337.09
6800 · Credit Card Fees	9000 Management and General	General Journal	02/28/2021	FebGL06	✓	Bank Charges	414.45		751.54
6800 · Credit Card Fees	9000 Management and General	General Journal	03/03/2021	MarchGL02	✓	Paypal Fee	30.00		781.54
6800 · Credit Card Fees	9000 Management and General	Bill	03/10/2021	February 2021	Wells Fargo	refund for late fee		39.00	742.54
6800 · Credit Card Fees	9000 Management and General	General Journal	03/24/2021	MarchGL09	✓	DEBIT MEMO #9088773692	495.00		1,237.54
6800 · Credit Card Fees	9000 Management and General	General Journal	03/31/2021	MarchGL06	✓	Bank Charges	394.88		1,632.42
6800 · Credit Card Fees	9000 Management and General	General Journal	04/05/2021	AprilGL03	✓	Paypal Fee	30.00		1,662.42
6800 · Credit Card Fees	9000 Management and General	General Journal	04/30/2021	AprilGL05	✓	Bank Charges	314.74		1,977.16
6800 · Credit Card Fees	9000 Management and General	General Journal	05/04/2021	MayGL04	✓	Paypal Fee	30.00		2,007.16
6800 · Credit Card Fees	9000 Management and General	General Journal	05/28/2021	MayGL05	✓	Bank Charges	3,958.91		5,966.07
Total 6800 · Credit Card Fees							6,005.07	39.00	5,966.07
6810 · Licenses & Fees									0.00
6810 · Licenses & Fees	9000 Management and General	Bill	01/10/2021	Jan 2021	Wells Fargo	late charge + finance charge	55.38		55.38
6810 · Licenses & Fees	9000 Management and General	Bill	03/15/2021	210316	Dawsey Intellectual Property Law	Trademark Application for CORE	575.00		630.38
6810 · Licenses & Fees	9000 Management and General	Bill	04/09/2021	040921	Wells Fargo	State Corp Commission	25.00		655.38
6810 · Licenses & Fees	1000 Annual Conference	Bill	04/29/2021	100005633625	ASCAP	music license fee for 2021	135.00		790.38
Total 6810 · Licenses & Fees							790.38	0.00	790.38
6820 · Admin Supp/Contract Fee									0.00
6820 · Admin Supp/Contract Fee	9000 Management and General	Bill	01/01/2021	2021-01-08	NCSC	Admin Support/Contract fee	32,364.00		32,364.00
6820 · Admin Supp/Contract Fee	9000 Management and General	Bill	02/08/2021	2021-02-08	NCSC	Admin Support/Contract fee	32,363.00		64,727.00
6820 · Admin Supp/Contract Fee	9000 Management and General	Bill	03/08/2021	2021-03-08	NCSC	Admin Support/Contract fee	32,363.00		97,090.00
6820 · Admin Supp/Contract Fee	9000 Management and General	Bill	04/08/2021	2021-04-08	NCSC	Admin Support/Contract fee	32,363.00		129,453.00
6820 · Admin Supp/Contract Fee	9000 Management and General	Bill	04/30/2021	2021-05-08	NCSC	Admin Support/Contract fee	32,363.00		161,816.00
6820 · Admin Supp/Contract Fee	9000 Management and General	Bill	05/31/2021	2021-06-08	NCSC	Admin Support/Contract fee	32,363.00		194,179.00
Total 6820 · Admin Supp/Contract Fee							194,179.00	0.00	194,179.00
6950 · Depreciation									0.00
6950 · Depreciation	9000 Management and General	General Journal	02/28/2021	FebGL05	✓	Software Depreciation Jan-Feb	738.88		738.88
6950 · Depreciation	9000 Management and General	General Journal	03/31/2021	MarGL05	✓	Software Depreciation	369.44		1,108.32
6950 · Depreciation	9000 Management and General	General Journal	04/30/2021	AprGL05	✓	Software Depreciation	369.44		1,477.76
6950 · Depreciation	9000 Management and General	General Journal	05/31/2021	MayGL05	✓	Software Depreciation	369.44		1,847.20

Total 6950 - Depreciation								1,847.20	0.00	1,847.20
7030 - Grant Match-Admin Support										0.00
7030 - Grant Match-Admin Support	9000 Management and General	Bill	01/01/2021	2021-01-08	NCSC	Grant match-Admin		4,166.63		4,166.63
7030 - Grant Match-Admin Support	9000 Management and General	Bill	02/08/2021	2021-02-08	NCSC	Grant match-Admin Support		4,166.67		8,333.30
7030 - Grant Match-Admin Support	9000 Management and General	Bill	03/08/2021	2021-03-08	NCSC	Grant match-Admin Support		4,166.67		12,499.97
7030 - Grant Match-Admin Support	9000 Management and General	Bill	04/08/2021	2021-04-08	NCSC	Grant match-Admin Support		4,166.67		16,666.64
7030 - Grant Match-Admin Support	9000 Management and General	Bill	04/30/2021	2021-05-08	NCSC	Grant match-Admin Support		4,166.67		20,833.31
7030 - Grant Match-Admin Support	9000 Management and General	Bill	05/31/2021	2021-06-08	NCSC	Grant match-Admin Support		4,166.67		24,999.98
Total 7030 - Grant Match-Admin Support								24,999.98	0.00	24,999.98

National Association for Court Management
Bank Reconciliation
1000 Operating cash

	Type	Date	Num	Clr	Amount	Balance
Beginning Balance						55,724.23
Cleared Transactions						
Checks and Payments - 8 items						
	General Journal	05/03/2021	MayGL02	√	-250.00	-250.00
	General Journal	05/04/2021	MayGL04	√	-30.00	-280.00
	General Journal	05/06/2021	MayGL03	√	-650.00	-930.00
	General Journal	05/07/2021	MayGL07	√	-169.17	-1,099.17
	General Journal	05/17/2021	MayGL09	√	-2,109.50	-3,208.67
	General Journal	05/21/2021	MayGL08	√	-1,789.00	-4,997.67
	General Journal	05/27/2021	MayGL06	√	-729.20	-5,726.87
	General Journal	05/28/2021	MayGL07	√	-29,029.67	-34,756.54
Total Checks and Payments					-34,756.54	-34,756.54
Deposits and Credits - 10 items						
	Deposit	05/03/2021		√	1,850.00	1,850.00
	General Journal	05/04/2021	MayGL06	√	4,887.66	6,737.66
	Deposit	05/10/2021		√	4,490.00	11,227.66
	General Journal	05/10/2021	MayGL07	√	4,491.90	15,719.56
	Deposit	05/17/2021		√	6,690.00	22,409.56
	Deposit	05/19/2021		√	135.00	22,544.56
	General Journal	05/24/2021	MayGL05	√	21.37	22,565.93
	Deposit	05/24/2021		√	6,770.00	29,335.93
	General Journal	05/28/2021	MayGL01	√	1.17	29,337.10
	General Journal	05/28/2021	MayGL05	√	124,111.09	153,448.19
Total Deposits and Credits					153,448.19	153,448.19
Total Cleared Transactions					118,691.65	118,691.65
Cleared Balance					118,691.65	174,415.88
Uncleared Transactions						
Deposits and Credits - 1 item						
	Deposit	05/28/2021			3,090.00	3,090.00
Total Deposits and Credits					3,090.00	3,090.00



National Association for Court Management

Strengthening Court Professionals

Committee Progress Report Form – 2020-2021

	Report	Due Date	Submission Date
	Fall Progress Report	November 4, 2020	
	Midyear Progress Report	February 1, 2021	
x	Annual Progress Report	June 14, 2021	June 3, 2021

Project	Project Status	Strategic Priority? (Yes/No)	Discussion Needed? (Yes/No)	Board Action Needed? (Yes/No)	If Yes to discussion or action, please describe what needed
National Agenda	Complete and published on the NACM site with links to resources on separate page - updated the site in May 2021 after Court Express released	Yes	No	No	
Operations Manual	Almost completed for 2021 - see link for the manual Need to review/update some documents for inclusion - spreadsheet (2nd link) Would like to consider SOP software to provide a more streamlined way to update this on a regular basis - my recommendation is for Process St, offers what we need and can have one main user with multiple guests, 2nd	No	Yes	Yes	Update items and approve for release Ops Manual - https://drive.google.com/file/d/1H-6PpHNp-zHqtQ03EDEL9ubZJPIG7Kut/view?usp=sharing Items needing review- https://docs.google.com/spreadsheets/d/1kAZ70kb

	option is TallyfyDocs				whfe lohXLD5pp_kSfgOm qEcZOGCVVG5ZBBc/edit?usp=sharing SOP software options - https://docs.google.com/spreadsheets/d/151pcHYZlZ8Zu_2fdt1ugHAhiu5gkmr64j9FRb1PWJQQ/edit?usp=sharing
Ethics Committee	Continual updating of Ethics Code Catalog online; will need to find new chair	No	No	No	
State of the Profession Address	Small committee worked diligently to create a fantastic speech	No	No	No	
Voice of the Profession Survey	Thank you to the subcommittee for the creation of this survey - will release during the conference	Yes	No	No	
Diversity, Equity, and Inclusion Committee	Regularly meeting and discussing DEI and how NACM can ensure proper integration - has been added to CORE	Yes	Yes	No	
Resolutions	Posted to the site for 30 days - assume no comment	Yes	Yes	Yes	Board accept as posted?

Time needed at meeting for Committee report: 20 minutes

Submitted by: Angie VanSchoick

Date: June 3, 2021



National Association for Court Management

Strengthening Court Professionals

Membership Committee Progress Report Form – 2020-2021

	Report	Due Date	Submission Date
	Fall Progress Report	November 4, 2020	
	Midyear Progress Report	February 1, 2021	
X	Annual Progress Report	June 2021	

Project	Project Status	Strategic Priority? (Yes/No)	Discussion Needed? (Yes/No)	Board Action Needed? (Yes/No)	If Yes to discussion or action, please describe what needed
Membership Scholarship giveaway/drive during annual	Recommendation from Membership Committee to give away one membership scholarship to a non-member attending the conference and one to a virtual non-member attendee	Yes	Yes	Yes	We gave away two scholarships during mid year.
NACM awards	Recommendation to review criteria for awards	Yes	Yes	Yes	Review/approval of criteria for Award of Merit, Perkins Award and ECP award. Are these awards one time only?

Project	Project Status	Strategic Priority? (Yes/No)	Discussion Needed? (Yes/No)	Board Action Needed? (Yes/No)	If Yes to discussion or action, please describe what needed
Membership numbers	As of May, we are at 1507 members per the report. On the website, the directory indicates 1759.	Yes	Yes	Yes	Discuss updating the ACGI software.
Social Media engagement	Using Social Media to engage members, through videos, articles, etc	Yes	No	No	
Mentorship Program	Mentorship Program Guide updated and posted to website	Yes	No	No	
Ambassador program	Pilot program developed; need to roll out program this upcoming year	Yes	No	No	
ECP	ECP spotlight in Court Express, social media	Yes	No	No	
Merch by Amazon	SWAG items – added new items, totes and phone cases	Yes	No	No	
Target California, Texas, Florida, New York	California and Texas Associations approached last year, will focus on Florida and New York in upcoming year	Yes	No	No	

Time needed at meeting for Committee report:

Submitted by: Tina Mattison and Michelle Dunivan

Date: June 14, 2021

AWARD CRITERIA

Enhancing Justice Award:

Projects must be operational, have produced results, and cannot be in the planning stages. Any organization, from large to small, is encouraged to submit applications for the Enhancing Justice Award. The following criteria will be used to review/evaluate to what degree the nomination:

- a. Identified a specific problem or problems;
- b. Identified target groups, their needs, and how the project would address those needs;
- c. Considered alternatives and demonstrated that the project was a more efficient and/or more effective way of solving the identified problem(s);
- d. Described the details of project implementation;
- e. Evaluated the project's outcomes by measuring its effectiveness through time/money/resource savings, meeting previously identified needs, or improving service delivery; and
- f. Demonstrated that the project could be replicated by other jurisdictions.

Award of Merit:

This award is presented annually to recognize distinguished service and outstanding contributions to the profession of court administration on a national basis. Nominees should possess most of or all the attributes described below:

- Demonstrates leadership and helps to improve the administration of justice and delivery of public service through the application of modern management techniques;
- Supports the independence of the judiciary;
- Promotes coordination of court research activities and furnishes a forum for the exchange of practical information relating to judicial administration;
- Increases the proficiency of judicial administrators through service and contributions to the field of court administration and to NACM;
- Work is demonstrated not just at a local court level, but at a national level having a wide-reaching effect; and
- Enhances education for court managers and the profession as a whole.

Perkins Award:

In honor of Linda Perkins, who served NACM from 1985 to 2013, this award is presented annually to an individual who consistently goes above and beyond the call of duty to make behind-the-scenes contributions to the field of court administration, the court in which he or she works, and ultimately to the public we serve. Nominees should possess most of or all the attributes described below:

- Demonstrates a commitment to achieving organizational success;
- Demonstrates outstanding public service, diplomacy, consistent professionalism, and outstanding skill levels in all phases of the job regardless of his or her rank, profile, or status;
- Exhibits a high level of knowledge about the field of court administration;
- Handles unforeseen events or circumstances quickly, gracefully, and effectively;
- Works to enhance the knowledge, skill-level, training, and development of coworkers and colleagues in a spirit of helpfulness and generosity with patience and good will;
- Serves as a reliable and trusted resource and confidante to coworkers, colleagues, and managers, offering sound advice, sharing challenges and frustrations, and offering support with the greatest discretion and grace;
- Diligently performs his/her duties with dependability, consistency, and a desire to do the right thing regardless of visibility, recognition, or reward; and
- Consistently and unselfishly contributes to advancing the ideals and principles of public service, modern judicial management, and professional court management as embodied in NACM and its purposes.

Outstanding ECP Award:

This award is presented annually to recognize distinguished service and outstanding contributions to the profession of court administration and the judicial system by an early career professional. Nominees should possess most of or all the attributes described below:

- Is a current NACM member in good standing;
- Is either under the age of 40 or has fewer than 10 years of experience in the judicial system;
- Work products reflect a dedication to the ideals embodied in NACM and its purposes; and
- Demonstrates exemplary professional proficiency, service to the profession, and service to his/her community, state, and nation.

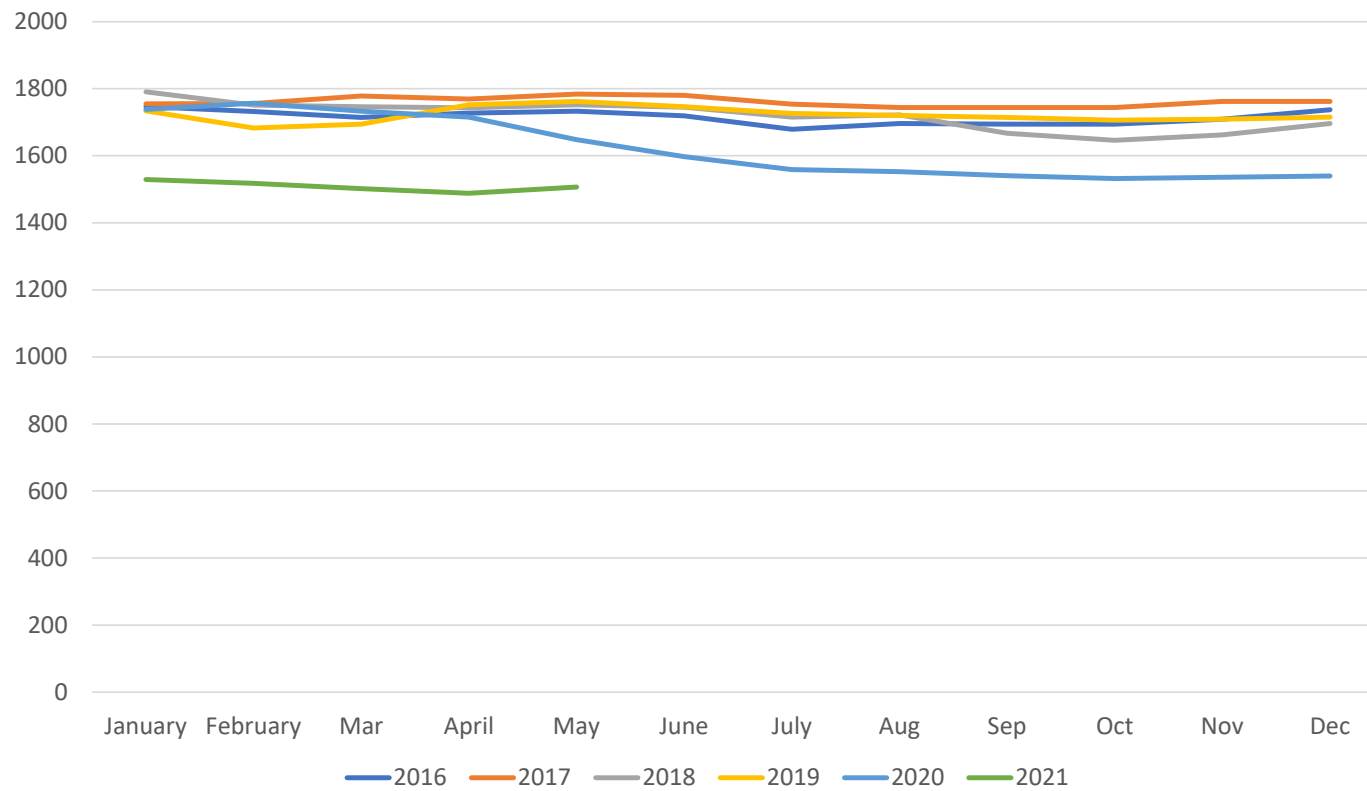
NEW MEMBERS TO NACM								
	2014	2015	2016	2017	2018	2019	2020	2021
January	46	37	24	33	41	24	25	11
February	28	34	16	22	11	13	40	24
March	25	30	17	40	31	48	15	15
April	36	30	39	17	23	59	11	15
May	52	65	22	32	40	26	5	26
June	25	36	18	23	21	21	9	25
July	19	15	16	20	9	20	5	
August	20	11	47	11	6	24	13	
September	10	11	15	10	17	8	14	
October	13	23	16	14	11	15	15	
November	9	10	21	18	12	12	18	
December	14	16	38	12	29	17	22	
TOTAL:	297	318	289	252	251	287	192	

DROPPED/PURGED MEMBERS								
	2014	2015	2016	2017	2018	2019	2020	2021
January	-30	-24	-17	-24	-28	-1	-23	-26
February	-67	-36	-37	-30	-56	-75	-40	-45
March	-47	-49	-38	-36	-42	-53	-44	-47
April	-28	-28	-34	-32	-37	-22	-31	-44
May	-44	-31	-25	-23	-44	-35	-76	-28
June	-36	-43	-43	-33	-35	-46	-74	-36
July	-35	-58	-61	-54	-44	-48	-47	
August	-42	-31	-34	-30	0	-39	-27	
September	-27	-19	-19	-16	-73	-20	-41	
October	-25	-23	-17	-19	-35	-29	-31	
November	-23	-19	-12	-14	-13	-20	-18	
December	-9	-17	-18	-21	-1	-18	-22	
TOTAL:	-413	-378	-355	-332	-408	-406	-474	

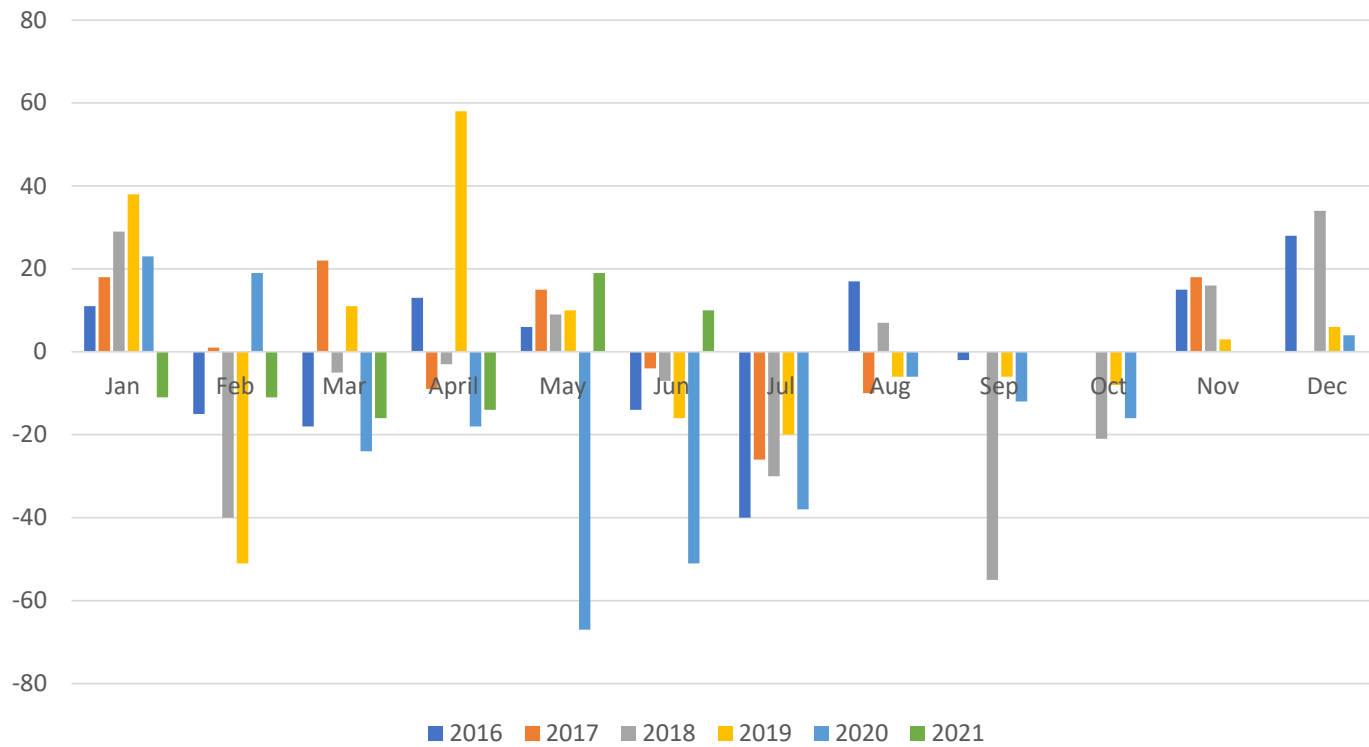
TOTAL MEMBERS								
	2014	2015	2016	2017	2018	2019	2020	2021
January	1716	1713	1747	1755	1791	1734	1738	1529
February	1685	1723	1732	1756	1751	1683	1757	1518
March	1672	1719	1714	1778	1746	1694	1733	1502
April	1708	1731	1727	1769	1743	1752	1715	1488
May	1746	1781	1733	1784	1752	1762	1648	1507
June	1748	1787	1719	1780	1745	1746	1597	1517
July	1734	1747	1679	1754	1715	1726	1559	
August	1715	1733	1696	1744	1722	1720	1553	
September	1703	1729	1694	1744	1667	1714	1541	
October	1695	1734	1694	1744	1646	1706	1532	
November	1682	1730	1709	1762	1662	1709	1536	
December	1693	1736	1737	1762	1696	1715	1540	
Average:	1708.08	1738.58	1715.08	1761	1719.67	1721.75	1620.75	

REINSTATED MEMBERS								
	2014	2015	2016	2017	2018	2019	2020	2021
January	12	7	4	9	16	11	16	4
February	8	12	6	9	5	10	15	10
March	9	15	3	18	6	14	5	16
April	28	10	8	6	11	21	1	15
May	30	16	9	6	13	19	4	21
June	13	13	11	6	7	9	14	21
July	2	4	5	8	5	8	4	
August	3	6	4	9	1	9	8	
September	5	4	2	6	1	6	14	
October	4	5	1	5	3	6	7	
November	1	5	6	14	17	8	4	
December	6	7	8	9	6	7	4	
TOTAL:	121	104	67	105	91	128	96	

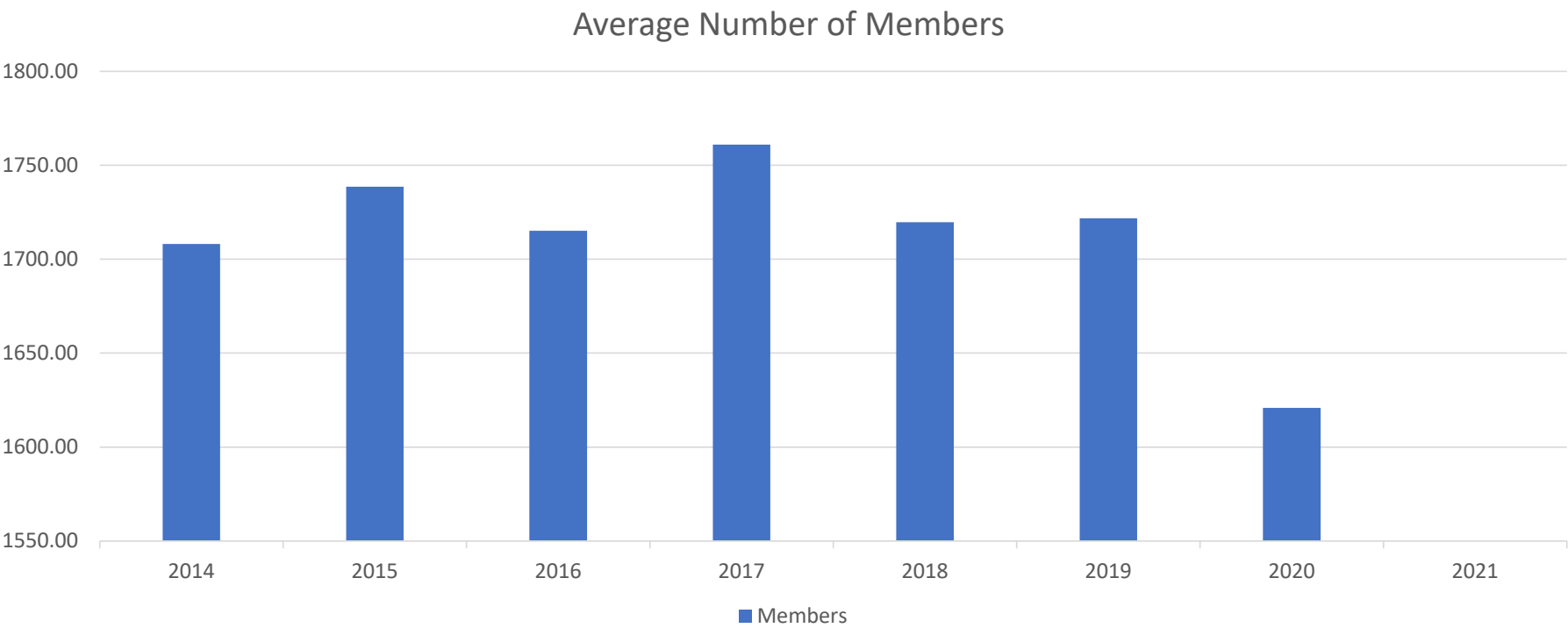
NACM Membership Trends (Annually)



Net member loss/gain (New Members + New Members Comp + Reinstated– Dropped/Purged)



Average Members/Year



NACM Membership Numbers

2012			2013			2014			2015		
Month	Members	Gain/Loss	Month	Members	Gain/Loss	Month	Members	Gain/Loss	Month	Members	Gain/Loss
January	1808	10	January	1770	14	January	1716	28	January	1713	20
February	1812	4	February	1737	-33	February	1685	-31	February	1723	10
March	1797	-15	March	1728	-9	March	1672	-13	March	1719	-4
April	1805	8	April	1723	-5	April	1708	36	April	1731	12
May	1791	-14	May	1708	-15	May	1746	38	May	1781	50
June	1796	5	June	1717	9	June	1748	2	June	1787	6
July	1785	-11	July	1705	-12	July	1734	-14	July	1747	-40
August	1763	-22	August	1682	-23	August	1715	-19	August	1733	-14
September	1748	-15	September	1675	-7	September	1703	-12	September	1729	-4
October	1743	-5	October	1668	-7	October	1695	-8	October	1734	5
November	1749	6	November	1672	4	November	1682	-13	November	1730	-4
December	1756	7	December	1688	16	December	1693	11	December	1736	6
TOTAL YEAR +/-		-42	TOTAL YEAR +/-		-68	TOTAL YEAR +/-		5	TOTAL YEAR +/-		43

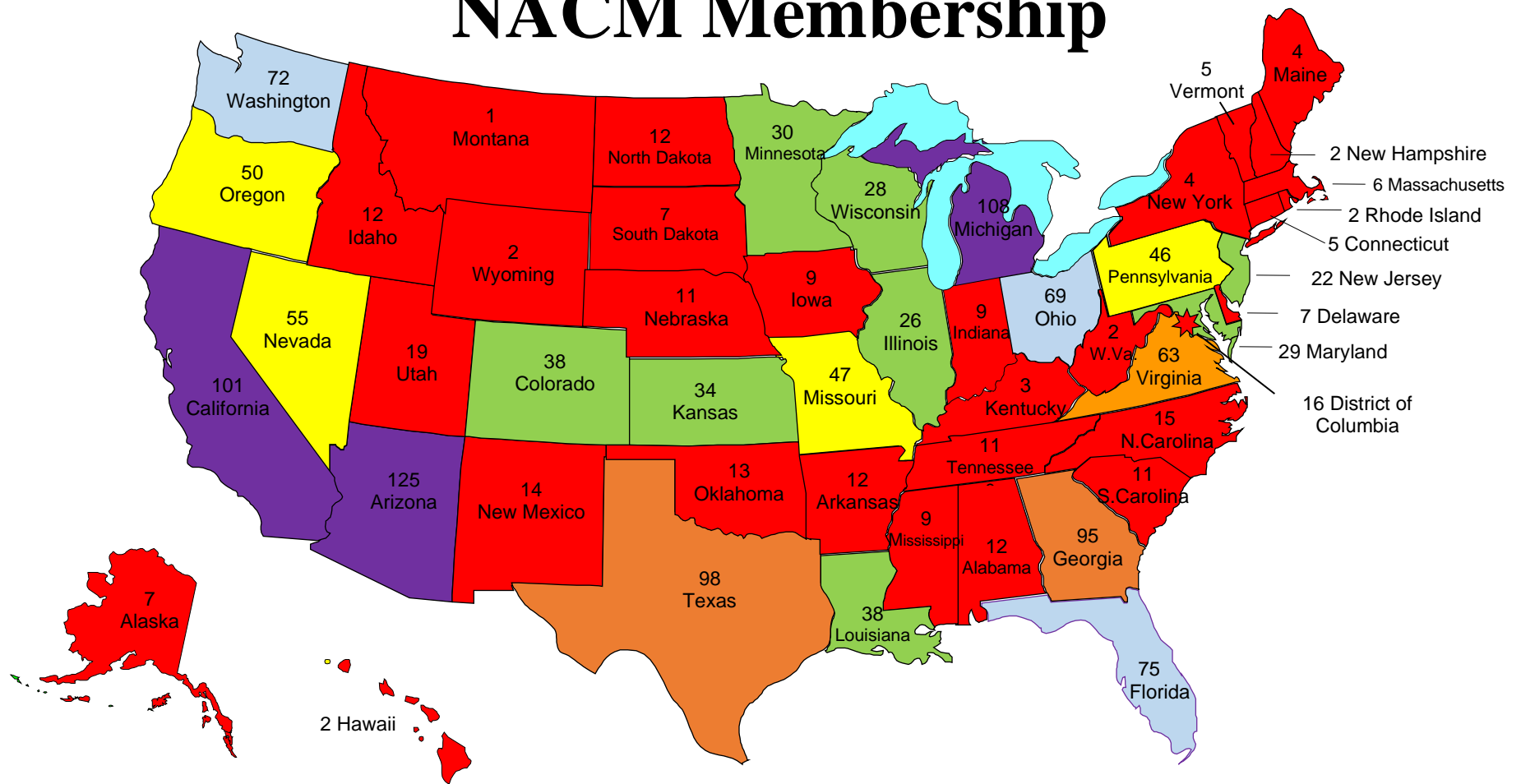
2016			2017			2018			2019		
Month	Members	Gain/Loss		Members	Gain/Loss		Members	Gain/Loss		Members	Gain/Loss
January	1747	11	January	1755	18	January	1791	29	January	1734	38
February	1732	-15	February	1756	1	February	1751	-40	February	1683	-51
March	1714	-18	March	1778	22	March	1746	-5	March	1694	11
April	1727	13	April	1769	-9	April	1743	-3	April	1752	58
May	1733	6	May	1784	15	May	1752	9	May	1762	10
June	1719	-14	June	1780	-4	June	1745	-7	June	1746	-16
July	1679	-40	July	1754	-26	July	1715	-30	July	1726	-20
August	1696	17	August	1744	-10	August	1722	7	August	1720	-6
September	1694	-2	September	1744	0	September	1668	-55	September	1714	-6
October	1694	0	October	1744	0	October	1647	-21	October	1706	-8
November	1709	15	November	1762	18	November	1662	16	November	1709	3
December	1737	28	December	1762	0	December	1696	34	December	1715	6
TOTAL YEAR +/-		1	TOTAL YEAR +/-		25	TOTAL YEAR +/-		-66	TOTAL YEAR +/-		19

2020			TOTAL through 2020		2021		
	Members	Gain/Loss	Month	Gain/Loss	Month	Members	Gain/Loss
January	1738	23	January	191	January	1529	-11
February	1757	19	February	-136	February	1518	-11
March	1733	-24	March	-55	March	1502	-16
April	1715	-18	April	92	April	1488	-14
May	1648	-67	May	32	May	1507	19
June	1597	-51	June	-70	June	1517	10
July	1559	-38	July	-231	July		
August	1553	-6	August	-76	August		
September	1541	-12	September	-113	September		
October	1532	-9	October	-53	October		
November	1536	4	November	49	November		
December	1540	4	December	112	December		
TOTAL YEAR +/-		-175	TOTAL	-258	TOTAL		-23

	2015	2016	2017	2018	2019	2020	2021
Jan	37	24	33	41	28	30	11
Feb	34	16	22	11	14	44	24
Mar	30	17	40	31	50	15	15
Apr	30	39	17	23	59	12	15
May	65	22	32	40	26	5	26
Jun	36	18	23	21	21	9	25
Jul	15	16	20	9	20	9	
Aug	11	47	11	6	24	13	
Sep	11	15	10	17	8	15	
Oct	23	16	14	11	15	15	
Nov	10	21	18	12	15	18	
Dec	16	38	12	29	17	22	
New Members	318	289	252	251	297	207	
Percentage of membership	18%	17%	14%	15%	17%	13%	0%
Members Jan 1	1713	1736	1737	1762	1734	1715	1715
Members Dec 31	1736	1737	1762	1696	1715	1540	
RETENTION RATE	0.8277875	0.8341014	0.8693149	0.8200908	0.8047673	0.768743	0
	82.78%	83.41%	86.93%	82.00%	80%	80%	80%

*New Members + New Complimentary Members

NACM Membership



NACM Members

U.S. Territories:

American Samoa	2
Guam	4
Puerto Rico	1
Bahamas	1
Virgin Islands	3

Total U.S. and Territories – 1,504

Total Membership -1,517

International:

Australia	1
British Columbia	1
Canada	7
Luxembourg	1
Marshall Islands	1
Scotland	1
Trinidad & Tobago	1

Total International - 13

Total members by state

1 to 20	Red
21 to 40	Green
41 to 60	Yellow
61 to 80	Blue
81 to 100	Orange
Over 100	Purple



National Association for Court Management

Strengthening Court Professionals

Communications Committee Progress Report Form – 2020-2021

	Report	Due Date	Submission Date
	Fall Progress Report	November 4, 2020	
	Midyear Progress Report	February 1, 2021	
X	Annual Progress Report	June 2021	June 7, 2021

Project	Project Status	Strategic Priority? (Yes/No)	Discussion Needed? (Yes/No)	Board Action Needed? (Yes/No)	If Yes to discussion or action, please describe what needed
Podcasts	<p>January 21, 2021: Local Courts – Their Complex Issues and How They Are Solving Them.</p> <p>January 28, 2021: Bonus Episode Two on Local Courts.</p> <p>February 18, 2021: Telework: Is There a Secret to Effective Management?</p> <p>March 16, 2021: What You Need to Know About Juvenile Detention and Placement Decision-Making and COVID.</p> <p>April 20, 2021: Part One – Is There a Key to Effective Communication? Particularly During the Pandemic.</p> <p>April 27, 2021: Part Two – Is There a Key to Effective Communication? Let's Hear from You!</p> <p>May 18, 2021: NACM's International Committee</p> <p>June 15, 2021: International Consulting Work</p> <p><i>Episodes air monthly on the third Tuesday.</i></p>	Yes ¹	No	No	

¹ SFA#1, Goal 1.3 Increase use of social media for outreach, distribution of materials, and communication.

Project	Project Status	Strategic Priority? (Yes/No)	Discussion Needed? (Yes/No)	Board Action Needed? (Yes/No)	If Yes to discussion or action, please describe what needed
Social Media	Kevin Lane has increased NACM's social media on Facebook, Instagram, LinkedIn, Twitter, and YouTube. Zenell Brown, Cristina Prieto, and Rob Zastany have joined the effort. New postings include membership, Early Career Professionals, Midyear Educational Series Webinars, NACM Annual Awards, NACM swag, and newsworthy items.	Yes ²	No	No	
Webinars	<p>January 7, 2021 Webinar: <i>Robotic Process Automation – Empowering Courts to Tackle Challenges in New Ways</i> sponsored and presented by Ankobia Group, LLC.</p> <p>NACM Midyear Educational Series Webinars:</p> <p>February 25, 2021 Webinar: <i>Translating Learning to the Virtual Classroom.</i></p> <p>March 18, 2021 Webinar: <i>2020 Media Guide: in a Nutshell.</i></p> <p>April 22, 2021 Webinar: <i>Why Would You Want To Go Back?</i></p> <p>May 20, 2021 Webinar: <i>CORE Session: Purposes of Courts – The Challenges</i></p> <p>June 23, 2021 Webinar: <i>From Crisis to Convenience: The Future of Traffic Courts in a Post-Pandemic World.</i></p> <p>August 18, 2021 Webinar: <i>Justice Reimagined – The Future of Courts After COVID.</i></p> <p>TBA 2021 Webinar: <i>How New Court Technology is Improving Productivity Across the Judicial System.</i></p>	Yes	Yes	No	

² SFA#1, Goal 1.3 Increase use of social media for outreach, distribution of materials, and communication.

Project	Project Status	Strategic Priority? (Yes/No)	Discussion Needed? (Yes/No)	Board Action Needed? (Yes/No)	If Yes to discussion or action, please describe what needed
Court Express	2021 Production Schedule and Ad Rates are posted on the website. <i>September Vol. 22/3</i> Edition copy deadline: September 3 and Distribution: September 24 <i>November Vol. 22/4</i> Edition copy deadline: November 12 and Distribution: December 3	Yes	Yes	No	
Court Manager	2021 Production Schedule and Ad Rates are posted on the website. <i>Fall 2021 Vol. 36/3</i> edition submission deadline: July 19 ; final copy deadline: August 16 Magazine posted online September 27	Yes³	Yes	No	
Partnerships	Expand partnerships to advocate for the profession and increase partnership opportunities: 2020 NACM/CCPIO Media Guide; Partner with COSCA for awards; Dual Memberships. Develop partnerships in higher education: UNC-Charlotte, Johnson C. Smith University, NC A&T University, and Valdosta State University.	Yes⁴	Yes	No	
Website	Resource Repository – Completed and active on the NACM website. Publicize and encourage use. Website Landing Pages – 2021 Midyear Educational Series - February 25 through May 20, 2021 2021 Annual Conference and 2022 Midyear Conference and 2022 Annual Conference information on nacmnet.org/conferences .	Yes⁵	Yes	No	

³ SFA #2, Goal 2.2-Create a “database” of *Court Manager* and conference session materials by topics and authors. Goal 2.4 Partner Corner.

⁴ SFA #3, Goal 1.3 Partner with COSCA for awards for best contribution from front line employees.

⁵ SFA #2, Goal 2.2 and Goal 2.3 Develop website landing pages for key topics – SJI priorities, webinars, etc.

Project	Project Status	Strategic Priority? (Yes/No)	Discussion Needed? (Yes/No)	Board Action Needed? (Yes/No)	If Yes to discussion or action, please describe what needed
Public Landing Pages	Update public landing pages for key topics and audiences. Develop partnerships and projects to increase traffic to public landing pages.	Yes	Yes	No	
Electronic Membership Directory	New project initiated by the Communications Committee under the leadership of Dorothy Howell to link membership internally and provide another networking opportunity.	Yes	No	No	

Time needed at meeting for Committee report: 15 Minutes

Submitted by: Chair Charleston Carter

Date: June 7, 2021

2021 Annual Strategic Priorities

Strategic Focus Area #1: Membership Goal 1: Actively recruit and strive for a diverse and representative membership Goal 2: Increase opportunities for members to be active and renew their membership		
2021 Strategic Projects	Targeted Outcomes/ Measure of Success	Lead Committee Responsible
1. Monthly roundtables or SIG Style options to connect members.	<ul style="list-style-type: none"> Increased value of membership. Regular roundtables of different membership aspects (Court Clerks, ECP, etc.) Regional outreach - NACM sponsored small "meetings" 	Membership and Education
2. Online/Virtual Engagement Opportunities	<ul style="list-style-type: none"> Enhanced methods of engagement. 	Membership, Communications
3. Find ways to market to line staff/supervisors.	<ul style="list-style-type: none"> Increased membership 	Membership
4. Survey nonmembers who attend the virtual conference and upcoming webinar series and determine what their barriers are to becoming members.	<ul style="list-style-type: none"> Increased membership 	Membership, Past Presidents
5. Increased participation in Mentorship Program.	<ul style="list-style-type: none"> Creation of testimonial videos Promotion and partnership of program to other organizations (SHRM, HR Networks, etc.) 	Membership/ECP
6. Use Social media more to expose NACM (daily posts).	<ul style="list-style-type: none"> Greater Brand identification Enhance engagement opportunities via NACM's social media accounts. 	Communications
7. Ambassador Program.	<ul style="list-style-type: none"> Greater brand identification Increased membership 	Membership
8. Membership Drives with State Associations.	<ul style="list-style-type: none"> Increased membership New dual membership programs 	State Associations

GOAL 1: Actively recruit and strive for a diverse and representative membership.

Strategies:

- a. Improve and track membership data/information and other metrics.
- b. Define and communicate the value of membership.
- c. Recruit to new, diverse, and untapped groups and geographical regions.
- d. Strengthen practices for welcoming and orienting new members.
- e. Promote the court professional community and career development possibilities.

- f. Enhance networking opportunities.
- g. Implement other innovative recruitment and retention methods and practices.

GOAL 2: Increase opportunities for members to be active and renew their membership.

Strategies:

- a. Communicate and promote opportunities for involvement and professional growth.
- b. Implement other innovative engagement methods and practices.
- c. Assess and respond to the needs and interests of members.
- d. Leverage our national position and professional community to increase value of membership.
- e. Provide a forum for members to share Best Practices.
- f. Identify different ways to communicate regularly to members.
- g. Consider ways to revitalize the mentor program.

Strategic Focus Area #2:

Education and Resources

Goal 1: Increase involvement and participation in educational programming and resources.

Goal 2: Create educational opportunities and resources that reflect the needs of membership and the profession.

2021 Strategic Projects	Targeted Outcomes/ Measure of Success	Lead Committee Responsible
1. Complete CORE Champion Program.	<ul style="list-style-type: none">Enhanced member benefitsBrand awarenessExpansion of educational resources	Core
2. Complete resource repository.	<ul style="list-style-type: none">Enhanced member benefitsExpansion of educational resources	Communications
3. Develop plan for continuing webinars, podcasts and distance learning.	<ul style="list-style-type: none">Association continuityFocus on member benefits	Communications, Education Consultant
4. "Partner corner" in Court Manager and/or Court Express.	<ul style="list-style-type: none">Strengthening of partnershipsMember Benefits	Communications
5. Continue working with Education consultant to expand session topics.	<ul style="list-style-type: none">Expansion of educational resources	Education, Education Consultant

GOAL 1: Increase involvement and participation in educational programming and resources.

Strategies:

- Evaluate and continuously improve educational programming.
- Provide educational programming on the Core®, hot topics, innovative practices and emerging issues.
- Expand educational resources to meet needs and interests of diverse membership segments.
- Promote high-quality diverse faculty.
- Be strategic and intentional when selecting conference locations.
- Use technology/alternative delivery methods to expand access to or participation in educational programming.
- Partner with other organizations and associations to increase participation in educational programming.
- Identify ways to manage the cost of educational programming.
- Expand educational programming for different types of courts (i.e., rural, federal, municipal, problem solving).
- Develop certification programs, tracks or programs for new court leaders.

GOAL 2: Create educational opportunities and resources that reflect the needs of membership and the profession.

Strategies:

- a. Evaluate and improve existing resources and their accessibility.
- b. Develop new resources and informational materials to improve court administration and court/justice system performance.
- c. Be a thought-leader and produce resources/reference materials on hot topics, emerging issues, and promising practices.
- d. Market/communicate/distribute the availability of resources.

Strategic Focus Area #3:

Advocacy for the Profession

Goal 1: NACM will be an influential and respected voice on the behalf of courts and the court management profession.

2021 Strategic Projects	Targeted Outcomes/ Measure of Success	Lead Committee Responsible
1. Partner with Deans of Universities and Colleges, including Department Heads, to promote NACM.	<ul style="list-style-type: none">Educate and enhance relationships and communication.Increased brand awareness.	Governance
2. Engage with appropriate organizations to advocate that all judges receive meaningful training in Core® Competencies.	<ul style="list-style-type: none">Advocacy for the profession and the importance of continuing education.Greater exposure of NACM educational resources.	Core
3. Partner with COSCA for awards for best contribution from front line employees.	<ul style="list-style-type: none">Increased partnership opportunities.	Communications
4. Development of the annual Voice of Profession; National Agenda 2021-2025.	<ul style="list-style-type: none">Creation of program priorities in the court management professionResolutions and best practices for location/state associations and jurisdictions.	Governance
5. Engage state association leaders to offer up educational program ideas or speakers for a NACM repository.	<ul style="list-style-type: none">Increased partnership opportunities.Further development of educational resources.Identification of new and diverse speakers.Identification of possible SIG opportunities.	State Associations

Strategies:

- Pursue and participate in opportunities to educate about, and promote, the profession.
- Reach out to policy-makers to educate about the needs and important issues facing courts and the profession.
- Take a position and make recommendations on matters of importance.
- Develop advocacy resources and reference materials.
- Use innovative methods when communicating on behalf of the profession.
- Educate and enhance relationships and communication with judges, judge organizations, and judicial/legal communities.
- Highlight contributions to improved court/judicial branch performance.

Strategic Focus Area #4:

Association Governance

Goal 1: NACM's governance is representative, responsive and effective.

2021 Strategic Projects	Targeted Outcomes/ Measure of Success	Lead Committee Responsible
1. Install diversity, equity and inclusion into all governance and committee structures.	<ul style="list-style-type: none">Kickoff of subcommittee on diversity and inclusion.Committees should work together to seek out actionable, measurable steps that address not just how diversified and inclusive the association should be and is but also how each member will benefit from such inclusion.	Full Board
2. Cross-promote committees to expand exposure of NACM to all committee members.	<ul style="list-style-type: none">Increased committee participation.	Full Board
3. Focus on board diversity and board health.	<ul style="list-style-type: none">Greater Board participation.Internal mentorship and guidance opportunities.	Officers
4. Create video testimonials to promote Board and committee interest.	<ul style="list-style-type: none">Improved ways for recruiting diverse and skilled board members.	Full Board

Strategies:

- Improve the process for recruiting diverse, skilled, and enthusiastic Board and committee members.
- Orient, develop, and nurture board and committee members.
- Strengthen the cohesiveness and collaboration of the Board.
- Evaluate, improve, and align Board processes, procedures and practices with operational and strategic priorities.
- Seek partnerships with national, state, and local court associations and identify opportunities to collaborate.



Sheryl L. Loesch
President

Luis Maria Palma
President-Elect

June 15, 2021

T.J. BeMent, President
National Association for Court Management

Re: International Association for Court Administration, Inc.

Dear T.J.:

Thank you very much for the invitation to attend the NACM Board meeting. While I am planning on attending the conference, I was unable to get a flight that landed in time for me to get to the hotel in time for the lunch and meeting. In lieu of my attendance at the meeting, I am submitting this report and ask you to please share it with your Board members. I look forward to seeing you and the other NACM Board members at the reception.

First, IACA wishes to extend much gratitude to NACM for the wonderful partnership in numerous areas of interest. The association Templates are excellent and IACA has them posted on its website for members' use. The joint effort on the international podcasts have been met with positive and enthusiastic feedback and IACA appreciates being involved.

After a year of COVID, I am pleased to report that IACA is moving forward with a global conference scheduled March 28-31, 2022 in Helsinki, Finland. This location was originally selected for the 2020 conference. The conference theme is "People Centered Justice in the New Normal." IACA is in the process of developing the educational program; however, we already have confirmed speakers and facilitators who are most impressive. The IACA Board meeting will be held on March 28 in a conference room at the Supreme Court. The Mayor of Helsinki has agreed to host the President's Reception that evening at City Hall. During the conference opening session on March 29, the Minister of Justice has agreed to make some welcome remarks as well as the Chair of the International Judicial Relations Committee (a Committee of the Judicial Conference of the United States.) We hope the U.S. Ambassador to Finland will also be in attendance at some point during the conference. The IACA Board is excited about this conference and expects it may be a sell-out.

Under the direction of our good friend, Peter Kiefer, IACA is in the process of recording its second podcast, which is very exciting. The podcast subject matter will be on Performance Management. We hope to have the podcast available sometime later in July.

T.J. BeMent, President

Page Two

June 15, 2021

In the meantime, IACA has continued to publish both The Journal and The Court Administrator. As you may be aware, The Journal is more of an academic, scholarly publication whereas The Court Administrator is more of a “nuts and bolts” publication directly associated with court administrators. Sadly, our beloved friend and editor of The Court Administrator, Ralph DeLoach, unexpectedly passed away last year. The Co-Editor, Eileen Levine, quickly stepped up to the plate to continue with the ongoing production of that publication.

Thank you for the opportunity to share this IACA update with you. If you have any questions, please don't hesitate to contact me. I hope I get to see all of you in Helsinki in March!

All the best,

Sheryl Loesch
President